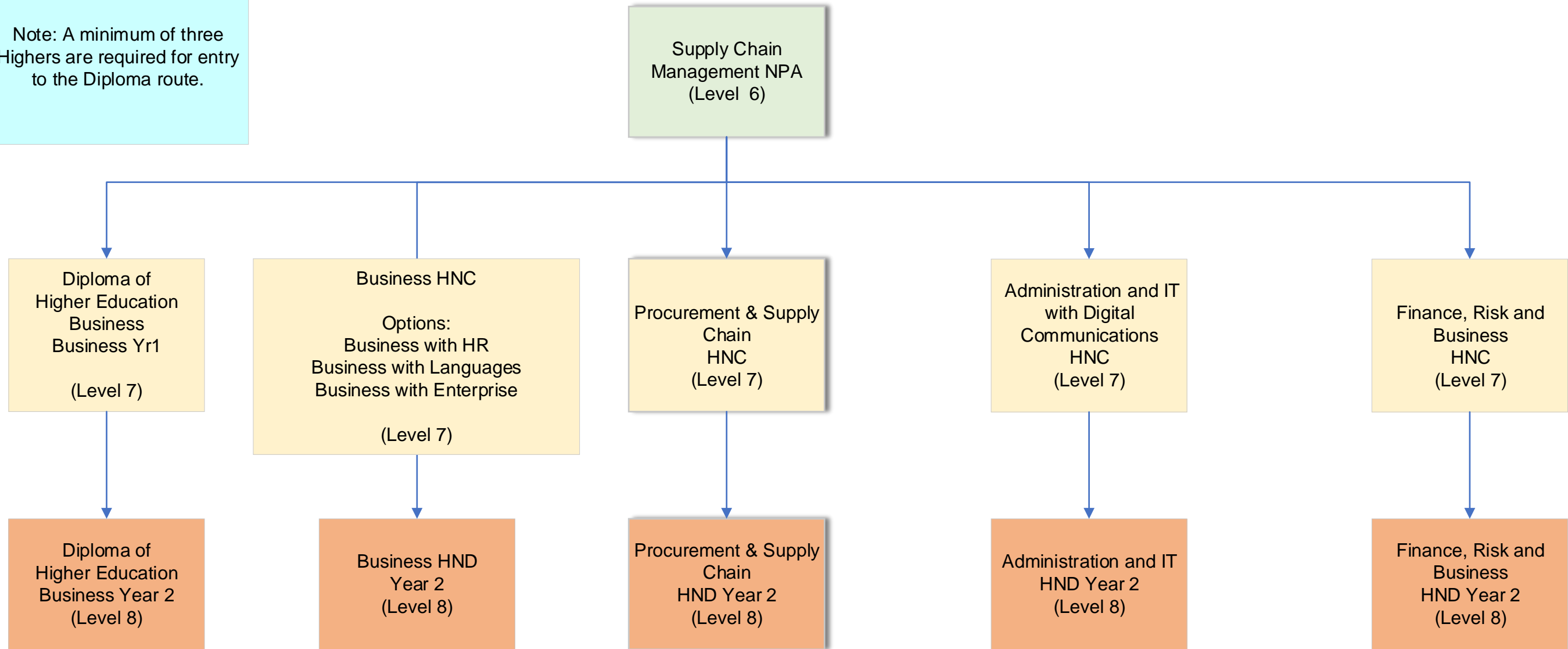


Note: A minimum of three Highers are required for entry to the Diploma route.



**University of Strathclyde**

(Level 10)  
 (3<sup>rd</sup> Year Entry Following Diploma of Higher Education)  
 BA Business  
 Strathclyde Business School

(2nd year entry following HND)  
 BA (Hons) Business  
 BA (Hons) Business Enterprise  
 BA (Hons) Economics

[www.strath.ac.uk](http://www.strath.ac.uk)

**Glasgow Caledonian University**

(Level 10)  
 (3rd year entry following HND)  
 BA (Hons) Business Management  
 BA (Hons) Economics Policy  
 BA (Hons) Finance Investment and Risk  
 BA (Hons) Risk Management  
 BA (Hons) International Business and Human Resource Management  
 BA (Hons) International Business  
 BA (Hons) International Supply Chain Management  
 BA (Hons) International Marketing

[www.gcu.ac.uk](http://www.gcu.ac.uk)

**University of West of Scotland**

(Level 10)  
 (3rd year entry following HND)  
 BA (Hons) Business  
 BA (Hons) Business & Finance  
 BA (Hons) Business and Human Resource Management  
 BA (Hons) Business & Marketing

[www.uws.ac.uk](http://www.uws.ac.uk)

Note: All courses are subject to change