



Looking for professional qualifications to further your career or to learn a new hobby? **WE HAVE A COURSE FOR YOU!**

---

### Evening & Saturday Morning Classes

You will find all the information you need to help you decide which course to choose on our website. You can also book a place and pay for your course online, however if you are using an ILA/Fee Waiver to pay for your course you will have to phone Student Services on 0141 566 6216.

### Day/Block Release/Sponsored Courses

You can download an application form and return to the address shown on the form or you can apply online at our website.

### ESOL Courses

You can download an application form and return to the address shown on the form.

Any student who hasn't been resident in an EU country for the last three years will be required to pay course fees at a higher rate. For more details contact the Finance Department on 0141 566 4152.

---

If you need any further information you can contact Student Services on **0141 566 6216** or **[apply@cityofglasgowcollege.ac.uk](mailto:apply@cityofglasgowcollege.ac.uk)**

# CONTENTS

---

Calendar	4
School of Art & Design	6
School of Business & Enterprise	12
School of Computing	20
School of Creative Industries	26
School of Food, Hospitality & Tourism	32
School of Hair, Beauty & Sport	42
School of Community, Care & Social Sciences	50
School of ESOL & Languages	56
School of Construction, Engineering & Energy	66
School of Nautical Studies	78
Map	83

---

**Disclaimer:** This information is correct at time of going to print. However, the College may need to make changes to the courses on offer including dates, times and costs. This brochure is intended to give an idea of courses on offer but for the most up to date information please visit [www.cityofglasgowcollege.ac.uk](http://www.cityofglasgowcollege.ac.uk)

# PART TIME COURSE CALENDAR

---

## Evening & Saturday Morning Courses

We have not included individual dates for our courses however they generally follow the same pattern – with some exceptions such as cookery courses.

<b>Evening / Saturday Morning courses are usually taught in 3 Blocks</b>	
<b>Block 1</b>	September 2013 - November 2013
<b>Block 2</b>	November 2013 - February 2014
<b>Block 3</b>	March 2014 - June 2014

## Part Time Courses

Part time courses will start Aug/Sep 2013. HN course generally run for 1 year starting in Aug/Sep 2013 and ending in June 2014.

There are some exceptions to this, so please check our website for full details of each course including dates.

The image shows a close-up, low-angle shot of a modern building's facade, characterized by a grid of glass panels and dark metal frames. The building is curved, and the sky is visible through the glass. In the foreground, a white sign is mounted on the building. The sign features the word "CITY" in large, 3D, light-colored block letters. To its right, the words "OF GLASGOW" and "COLLEGE" are written in a bold, purple, sans-serif font, stacked vertically. The overall composition is dynamic, with strong geometric lines and a sense of height and scale.

**CITY** OF GLASGOW  
**COLLEGE**

# School of





Course Title	Day	Time	How long	Cost	Where
Art & Design Portfolio Preparation	Thu	6-9pm	10 wks	£100	City Campus North Hanover St
Art & Design: Life Drawing	Tue	6-9pm	10 wks	£150	City Campus North Hanover St
Art in Watercolour Painting	Sat	9.30am-12.30pm	10 wks	£100	City Campus North Hanover St
Botanical Drawing & Painting	Thu	6-9pm	10 wks	£100	City Campus North Hanover St
Calligraphy	Thu	6-9pm	10 wks	£100	City Campus North Hanover St
Ceramic Art	Tue or Thu	6-9pm	15 wks	£170	City Campus North Hanover St
Contemporary Art Practice	Tue	6-9pm	10 wks	£100	City Campus North Hanover St
Creative Photoshop (Introduction)	Tue	6-9pm	10 wks	£110	City Campus North Hanover St
Decorative Glasswork	Tue or Thu	6-9pm	15 wks	£170	City Campus North Hanover St
	Sat	9.30am-12.30pm	10 wks	£130	

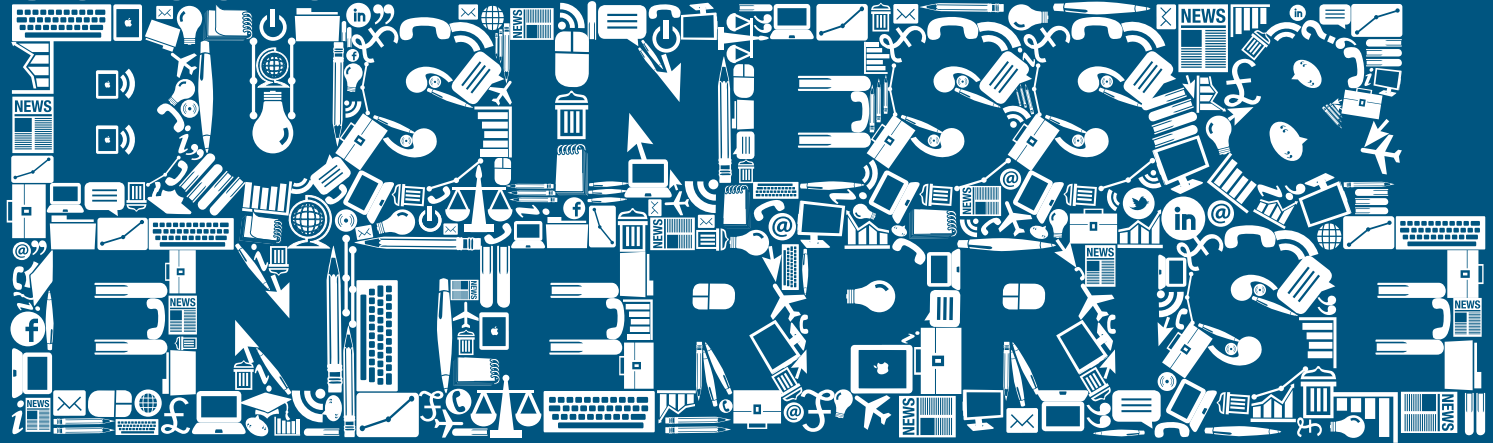




Course Title	Day	Time	How long	Cost	Where
Drawing for Beginners	Wed	6-9pm	10 wks	£100	City Campus North Hanover St
Drawing: An Individual Approach	Sat	9.30am-1pm	10 wks	£150	City Campus North Hanover St
Experimental Graphic Design	Tue	6-9pm	10 wks	£100	City Campus North Hanover St
Furniture Restoring: Polishing	Tue	6-9pm	16 wks	£185	Dornoch St Building
Furniture Restoring: Upholstery	Tue	6-9pm	16 wks	£185	Dornoch St Building
Graphic Design (Introduction)	Tue	6-9pm	10 wks	£100	City Campus North Hanover St
HNC Graphic Design	Tue	6-9pm	33 wks	£600	City Campus North Hanover St
Interior Design (Introduction)	Tue	6-9pm	10 wks	£100	City Campus North Hanover St
Interior Design Portfolio Preparation	Thu	6-9pm	10 wks	£100	City Campus North Hanover St
Jewellery Making - Beginners	Tue or Thu	6-9pm	10 wks	£140	City Campus North Hanover St
	Sat	9.30am-12.30pm			

Course Title	Day	Time	How long	Cost	Where
Jewellery Making (Intermediate)	Wed or Thu	6-9pm	10 wks	£140	City Campus North Hanover St
Oil Painting (Introduction)	Wed	6-9pm	10 wks	£100	City Campus North Hanover St
Printmaking & Mixed Media (Introduction)	Wed	6-9pm	10 wks	£100	City Campus North Hanover St
Upholstery Techniques	Fri	10am-3pm	15 wks	£420	City Campus North Hanover St
Warm Glass	Thu	6-9pm	15 wks	£220	City Campus North Hanover St
Students may be able to infill onto HN Graphic Design/Fine Art/Illustration/Interior Design/Furniture units on request	Various	Various	Various	Various	City Campus North Hanover St

School of





<b>Course Title</b>	<b>Day</b>	<b>Time</b>	<b>How long</b>	<b>Cost</b>	<b>Where</b>
<b>Accounting (HNC)</b>	Tue or Thu	9am-4.15pm	2 yrs	£600	City Campus Townhead
	Tue & Thu	6-9pm	2 yrs	£600	City Campus Charles Oakley
<b>Administration &amp; Information Technology (HNC)</b>	Wed or Thu	9am-4.15pm	2 yrs	£600	City Campus Charles Oakley
	Tue & Thu	6-9pm			
<b>Association of Accounting Technicians (AAT) Level 6 Diploma</b>	Wed	9am-4.15pm	1 yr	£1,166	City Campus Charles Oakley
	Tue & Thu	6-9pm			
<b>Association of Accounting Technicians (AAT) Level 8 Diploma</b>	Thu	9am-4.15pm	2 yrs	£1,500	City Campus Charles Oakley
	Tue & Thu	6-9pm			
<b>Business (HNC)</b>	Wed or Thu	9am-4.15pm	2 yrs	£600	City Campus North Hanover St
<b>CIM Certificate in Marketing</b>	Tue & Thu	6-9pm	36 wks	£460 per subject	City Campus Charles Oakley

<b>Course Title</b>	<b>Day</b>	<b>Time</b>	<b>How long</b>	<b>Cost</b>	<b>Where</b>
<b>CIM Diploma in Marketing</b>	Tue & Wed	6-9pm	34 wks	£460 per subject	City Campus Charles Oakley
<b>CIM Post Graduate Diploma in Marketing</b>	Wed & Thu	6-9pm	36 wks	£460 per subject	City Campus Charles Oakley
<b>CIPD - Advanced Diploma in Human Resource Management</b>	Tue (plus 3 Sat sessions)	6-9pm	varies	£750 per module	City Campus Charles Oakley
<b>CIPD Awards in Human Resources and Learning and Development Modules</b>	Tue	6-9pm	4-10 wks per module	Modules range from £170-£350	City Campus Charles Oakley
<b>CIPD - Certificate in Learning &amp; Development Practice</b>	Tue & Wed	6-9pm	1 yr	£1,400	City Campus Charles Oakley
<b>CIPD - Certificate in Human Resource Practice</b>	Tue	6-9pm	1 yr	£1,400	City Campus Charles Oakley



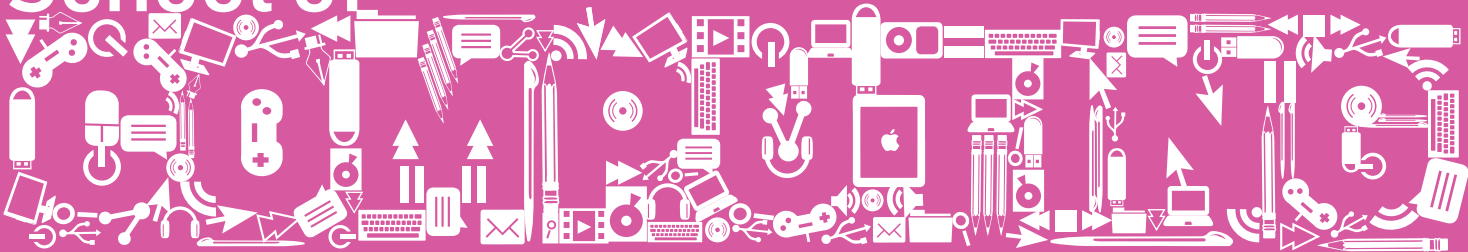


Course Title	Day	Time	How long	Cost	Where
CIPS Purchasing Level 2	Distance Learning	Distance Learning	20 guided hours	£410 per subject	Distance Learning
CIPS Purchasing Foundation Diploma Level 4	Tue	9.30am-4.30pm	1 yr	£410 per subject	City Campus Charles Oakley
	Tue & Thu	5.30-8.30pm			
CIPS Purchasing Advanced Diploma Level 5	Wed	9.30am-4.30pm	1 yr	£410 per subject	City Campus Charles Oakley
	Wed & Thu	5.30-8.30pm			
CIPS Purchasing Graduate Diploma Level 6	Thu	9.30am-4.30pm	1 yr	£410 per subject	City Campus Charles Oakley
	Tue & Thu	5.30-8.30pm			
College Certificate in Book-keeping	Tue or Wed	6-9pm	12 wks	£100	City Campus Charles Oakley
College Certificate in Computerised Accounting	Tue or Wed	6-9pm	12 wks	£100	City Campus Charles Oakley
College Certificate in Financial Accounting	Tue or Wed	6-9pm	12 wks	£100	City Campus Charles Oakley

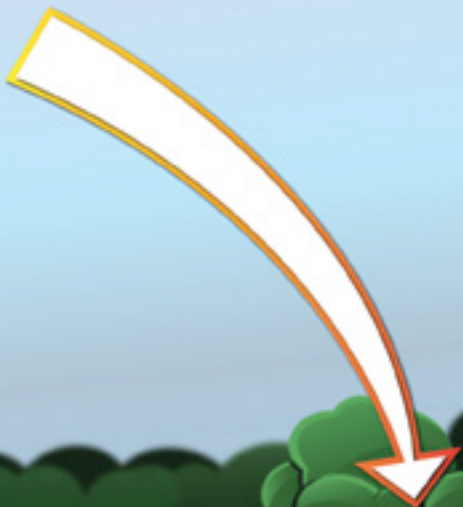
Course Title	Day	Time	How long	Cost	Where
PDA Book-keeping	Thu	6-9pm	1 yr	£315	City Campus Charles Oakley
PDA Financial Accounting	Tue or Thu	6-9pm	1 yr	£420	City Campus Charles Oakley
PDA Management Accounting	Tue or Thu	6-9pm	1 yr	£420	City Campus Charles Oakley
Marketing (HNC)	Thu	9am-4.15pm	2 yrs	£600	City Campus Charles Oakley
PDA Paralegal Combined (including Conveyancing, Debt Recovery, Executries)	Distance Learning	Distance Learning	3 x 12 wks teaching	£770	City Campus Charles Oakley
SVQ Level 3 Supply Chain Management	Distance Learning	Distance Learning	Usually 1 yr but flexible	£1,650	Work Based
SVQ Level 4 Supply Chain Management	Distance Learning	Distance Learning	Usually 1 yr but flexible	£1,950	Work Based
PDA Commissioning, Procurement & Contracting for Care Sevices	Distance Learning	Distance Learning	Usually 1 yr but flexible	£1,195	Work Based



School of



**HELP  
SANTA REACH  
THE MASTER WOODSMAN!!**





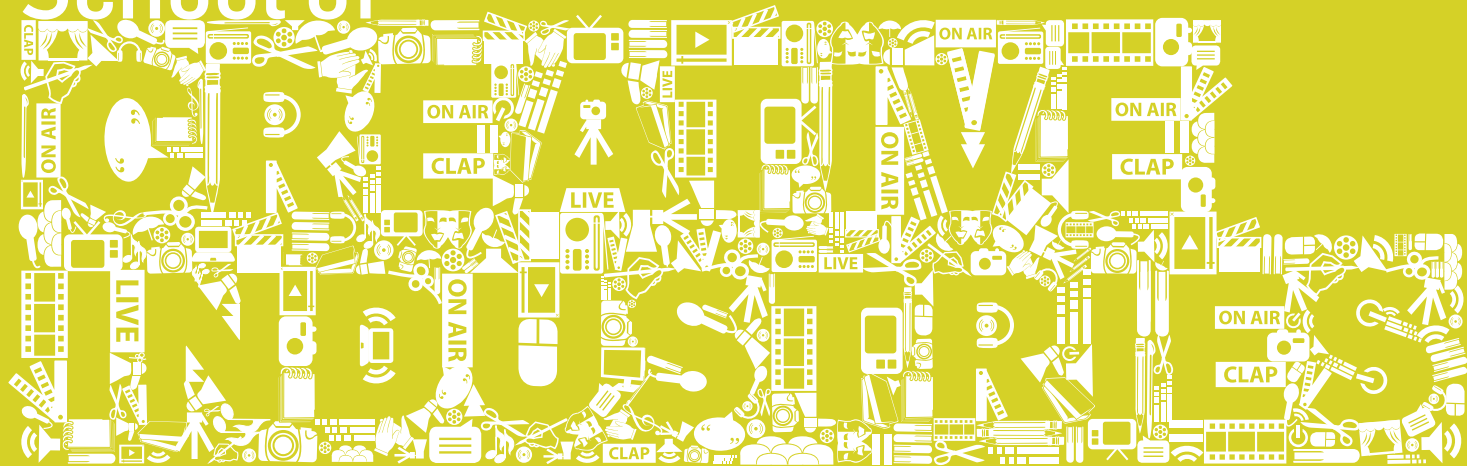
Course Title	Day	Time	How long	Cost	Where
Adobe Certified Expert - Photoshop CS5	Thu	6-9pm	22 wks	£360	City Campus North Hanover St
Adobe Certified Expert - Indesign CS5	Thu	6-9pm	20 wks	£350	City Campus North Hanover St
Adobe Illustrator CS5 - An Introduction	Tue	6-9pm	10 wks	£120	City Campus North Hanover St
An Introduction to Programming using Java	Tue	6-9pm	10 wks	£120	City Campus North Hanover St
An Introduction to Programming using Visual Basic	Wed	6-9pm	10 wks	£120	City Campus North Hanover St
Build Your Own PC	Thu	6-9pm	8 wks	£100	City Campus North Hanover St
Cisco Networking Academy Program	Tue & Thu	6-9pm	12 wks	£280	City Campus Charles Oakley
Computing (HNC)	Tue & Thu	6-9pm	38 wks	£600	City Campus North Hanover St

Course Title	Day	Time	How long	Cost	Where
ECDL	Tue	6-9pm	40 wks	£290	City Campus North Hanover St
	Sat	9.30am-2.30pm	40 wks	£290	City Campus Townhead
Advanced ECDL	Tue	tbc	tbc	£115 per subject	City Campus North Hanover St
Introduction to VFX for Film and Games	Wed	6-9pm	12 wks	£120	City Campus North Hanover St
Oracle Database Design & Programming with SQL	Thu	6-9pm	33 wks	£250	City Campus North Hanover St
Microsoft Office Specialist (Access, Excel, PowerPoint & Word)	Thu or Thu	6-9pm	12 wks per course	£130 per course	City Campus North Hanover St
Object Oriented Programming using Visual Basic	Thu	6-9pm	10 wks	£120	City Campus North Hanover St
Web Design and Web Authoring	Tue	6-9pm	10 wks	£120	City Campus North Hanover St



Swing your pellican mallet to strike the hedgehog through the goals. HINT! The higher the number of card the higher your score will be.

School of





Course Title	Day	Time	How long	Cost	Where
Advanced Photoshop for Photographers	Wed	6-9pm	10 wks	£100	City Campus North Hanover St
Bookbinding	Thu	6-9pm	10 wks	£130	City Campus North Hanover St
Break into Writing for a Living	Tue	6-9pm	10 wks	£100	City Campus North Hanover St
Fine Art Silk Screen Printing	Wed	6-9pm	10 wks	£100	City Campus North Hanover St
Introduction to Creative Printmaking	Wed	6-9pm	10 wks	£100	City Campus North Hanover St
Introduction to Digital Video	Wed	6-9pm	10 wks	£100	City Campus North Hanover St
Introduction to Digital Photography	Tue, Wed or Thu	6-9pm	10 wks	£100	City Campus North Hanover St
Intermediate Digital Photography	Tue or Wed	6-9pm	10 wks	£100	City Campus North Hanover St
Advanced Digital Photography	Thu	6-9pm	10 wks	£100	City Campus North Hanover St
Introduction to Photography	Wed or Thu	6-9pm	10 wks	£100	City Campus North Hanover St
	Sat	9.30am-12.30pm			





Course Title	Day	Time	How long	Cost	Where
HNC Media and Communication	Tue	6-9pm	38 wks	£600	City Campus North Hanover St
HNC Creative Industries: Professional Writing Skills	Tue	6-9pm	25 wks	£600	City Campus North Hanover St
Photography: Camera Techniques	Tue or Thu	6-9pm	10 wks	£130	City Campus North Hanover St
	Sat	9.30am-1pm			
Photography: Studio Portraiture	Tue	6-9pm	10 wks	£130	City Campus North Hanover St
Photography Portfolio Preparation	Wed	6-9pm	10 wks	£100	City Campus North Hanover St
Photography Workshop	Tue	6-9pm	10 wks	£100	City Campus North Hanover St
Speaking Confidently In Public	Sat	10am-12pm	10 wks	£80	City Campus North Hanover St
Studio Photography: An Introduction	Tue or Thu	6-9pm	10 wks	£130	City Campus North Hanover St
	Sat	9.30am-1pm			

School of







<b>Course Title</b>	<b>Day</b>	<b>Time</b>	<b>How long</b>	<b>Cost</b>	<b>Where</b>
<b>Airline Cabin Crew Preparation Course</b>	Tue	6-9pm	10 wks	£240	City Campus Townhead
<b>Appreciating Wine</b>	Tue	6-8pm	5 wks	£70	City Campus Townhead
<b>Appreciating Wine - The Next Stage</b>	Tue	6-8pm	5 wks	£70	City Campus Townhead
<b>BIIAB Scottish Certificate for Personal Licence Holders</b>	Various	9.45am-4.30pm	1 day	£110	City Campus Townhead
<b>BIIAB Level 2 Award in Door Supervision (Scotland)</b>	Various	9am-5pm	4 days	£200	City Campus Townhead
<b>BIIAB Level 2 Award in Security Guarding (Scotland)</b>	Various	9am-5pm	3 days	£180	City Campus Townhead
<b>BIIAB Scottish Certificate for Licensed Premises Staff (group booking only)</b>	To suit client needs	am/pm	½ day	See website for up to date costs	City Campus Townhead
<b>BIIAB Award for Upskilling Door Supervisors (Scotland)</b>	Various	8.45am-5pm	1 day	£95	City Campus Townhead



<b>Course Title</b>	<b>Day</b>	<b>Time</b>	<b>How long</b>	<b>Cost</b>	<b>Where</b>
<b>Cake Decoration 1 - Introduction to Sugarcraft (NQ)</b>	Tue, Wed or Thu	6-8pm	24 wks	£240	City Campus Townhead
<b>Cake Decoration 2 (NQ)</b>	Wed	6-8pm	36 wks	£380	City Campus Townhead
<b>Can't Cook Will Learn To Cook</b>	Wed or Thu	6-8pm	10 wks	£70	City Campus Townhead
<b>Chinese Cookery</b>	Wed	6-8pm	10 wks	£70	City Campus Townhead
<b>Christmas Cookery</b>	Tue, Wed or Thu	6-9pm	3 wks	£30	City Campus Townhead
<b>Come Dine With Me</b>	Wed	6-8pm	10 wks	£70	City Campus Townhead
<b>Cooking for Friends</b>	Tue	6-8pm	10 wks	£70	City Campus Townhead
<b>Craft Baking</b>	Wed	6-9pm	10 wks	£100	City Campus Townhead
<b>Credit Munch - Healthy Eating On A Budget</b>	Tue	6-8pm	10 wks	£70	City Campus Townhead

<b>Course Title</b>	<b>Day</b>	<b>Time</b>	<b>How long</b>	<b>Cost</b>	<b>Where</b>
<b>Fine Dining</b>	Wed	6-8pm	10 wks	£70	City Campus Townhead
<b>Gluten Free Cookery</b>	Tue	6-8pm	10 wks	£70	City Campus Townhead
<b>Gourmet Cookery</b>	Thu	6-8pm	10 wks	£70	City Campus Townhead
<b>Greek Cookery</b>	Tue	6-8pm	10 wks	£70	City Campus Townhead
<b>Indian/Asian Cookery</b>	Tue	6-8pm	10 wks	£70	City Campus Townhead
<b>Introduction to Sugar Flowers</b>	Wed	6-8pm	10 wks	£70	City Campus Townhead
<b>Intermediate Sugar Flowers</b>	Wed	6-8pm	10 wks	£70	City Campus Townhead
<b>Italian Cookery</b>	Tue	6-8pm	10 wks	£70	City Campus Townhead
<b>Bakery Level 1 (NQ)</b>	Tue	9am-4.30pm	41 wks	£210	City Campus Townhead
<b>Patisserie for Beginners</b>	Tue or Wed	6-9pm	10 wks	£100	City Campus Townhead
<b>Practical Cookery Demo for Teachers</b>	Wed	4.30-6.30pm	1 night	£40	City Campus Townhead



<b>Course Title</b>	<b>Day</b>	<b>Time</b>	<b>How long</b>	<b>Cost</b>	<b>Where</b>
<b>Professional Cookery - Ships Cooks</b>	Block Release	9am-4.30pm	6 wks	£700	City Campus Townhead
<b>Professional Cookery (HNC)</b>	Mon or Wed	9am-5pm	2 yrs	£600	City Campus Townhead
<b>Professional Cookery Years 1 &amp; 2</b>	Mon	9am-5pm	41 wks	£440	City Campus Townhead
<b>Scottish Cookery</b>	Tue	6-8pm	10 wks	£70	City Campus Townhead
<b>Sugar Paste Modelling</b>	Tue	6-8pm	10 wks	£70	City Campus Townhead
<b>Vegetarian Cooking for All Seasons</b>	Wed	6-8pm	10 wks	£70	City Campus Townhead
<b>Wine &amp; Spirit Education Trust (WSET) Certificate</b>	Tue	6.30-8.30pm	10 wks	£300	City Campus Townhead
<b>World Tour of Cookery</b>	Tue	6-8pm	10 wks	£70	City Campus Townhead
<b>REHIS Elementary Food Hygiene</b>	Various	9.15am-4.30pm	1 day	£55	City Campus Townhead

Course Title	Day	Time	How long	Cost	Where
REHIS Intermediate Food Hygiene	Various	9.15am-5pm	1 day per wk for 4 wks	£300	City Campus Townhead
REHIS Diploma in Advanced Food Hygiene	Various	9.30am-4.30pm	7 days	£750	City Campus Townhead
HABC Level 2 Award in HACCP for Caterers	Various	9.15am-4.30pm	1 day	£75	City Campus Townhead





# School of





<b>Course Title</b>	<b>Day</b>	<b>Time</b>	<b>How long</b>	<b>Cost</b>	<b>Where</b>
<b>Acrylic Nails (NQ Unit)</b>	Wed or Thu	6-9pm	12 wks	£130	City Campus Charles Oakley
<b>Bridal &amp; Evening Make-Up (NQ Unit)</b>	Tue or Wed	6-9pm	12 wks	£80	City Campus Charles Oakley
<b>Gel Nails (NQ Unit)</b>	Tue	6-9pm	12wks	£130	City Campus Charles Oakley
<b>Artificial Nail Structures</b>	Wed	6-9pm	12 wks	£130	City Campus Charles Oakley
<b>Beauty Therapy (HNC)</b>	Mon, Tue Eve & Sat morning	6.30-9.30pm & 9.30am- 12.30pm	2 yrs	£920	Riverside Campus
<b>Certificate in Clinical Aromatherapy - Part 1 Anatomy Physiology</b>	Tue	6-9pm	17 wks	£200	City Campus Charles Oakley
<b>Certificate in Clinical Aromatherapy - Part 2 Body Massage</b>	Tue or Wed	6-9pm	20 wks	£200	City Campus Charles Oakley
<b>Certificate in Clinical Aromatherapy - Part 3 Clinical Aromatherapy</b>	Tue & Wed	6-9pm	14 wks	£200	City Campus Charles Oakley

Course Title	Day	Time	How long	Cost	Where
Eye Enhancements (NQ Unit)	Tue	6-9pm	12 wks	£80	City Campus Charles Oakley
Facial Techniques (NQ Unit)	Tue	6-9pm	12 wks	£80	City Campus Charles Oakley
Gents Barbering (NQ)	Tue or Wed or Thu	6-9pm	1 year	£220	City Campus Charles Oakley
Barbering for Hairdressers	Tue	6-8.30pm	8 wks	£99	City Campus Charles Oakley
Hot Stone Therapy	Thu	6-9pm	13 wks	£200	City Campus Charles Oakley
Indian Head Massage (HN Unit)	Wed	6-9pm	13 wks	£200	City Campus Charles Oakley
Ladies Hair Create Design (NQ Unit)	Tue	6-9pm	1 yr	£220	City Campus Charles Oakley
Ladies Hairdressing (NQ)	Tue & Wed	6-9pm	2 yrs	£430	City Campus Charles Oakley
Latest Trends in Fashion Make-Up Part 1	Tue	6-8.30pm	8 wks	£99	City Campus Charles Oakley

Course Title	Day	Time	How long	Cost	Where
Latest Trends in Fashion Make-Up Part 2	Wed	6-8.30pm	8 wks	£99	City Campus Charles Oakley
Latest Trends in Fashion Make-Up Body Painting	Wed	6-8.30pm	8 wks	£99	City Campus Charles Oakley
Fashion Make-Up Halloween Make-Up	Wed	6-8.30pm	4 wks	£55	City Campus Charles Oakley
Manicure (NQ Unit)	Tue or Wed	6-9pm	12 wks	£80	City Campus Charles Oakley
Reflexology (HN Unit)	Thu	6-9pm	30 wks	£200	City Campus Charles Oakley
Skin Care and Make-up (NQ Unit)	Tue or Wed	6-9pm	24 wks	£160	City Campus Charles Oakley
SVQ Gents Hairdressing (SVQ Level 2)	Mon or Tue	9am-4.15pm	1 year	£430	City Campus Charles Oakley
Waxing Treatment (NQ Unit)	Tue	6-9pm	12 wks	£80	City Campus Charles Oakley
SVQ Hairdressing Level 2/3	Rolling enrolment, must be employed in the industry			£760	City Campus Charles Oakley

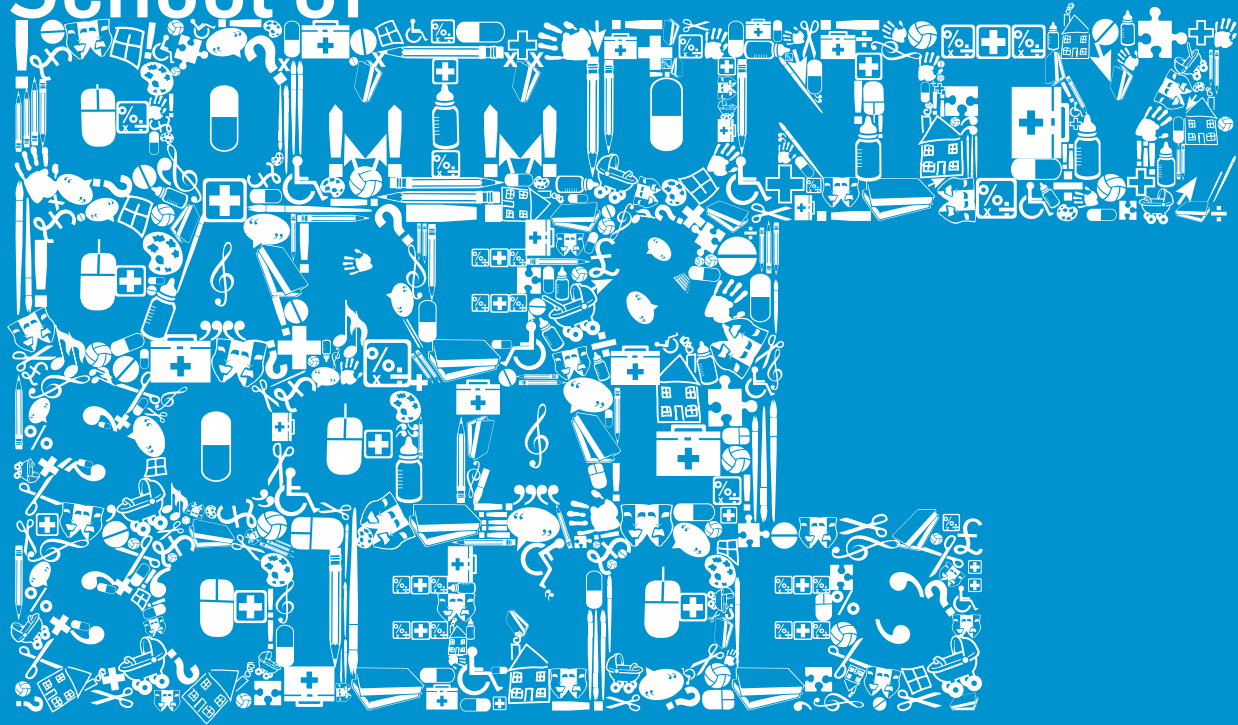






Course Title	Day	Time	How long	Cost	Where
Tap for Fitness & Enjoyment (Beginners)	Sat	9.30-10.30am	10 wks	£70	City Campus North Hanover St
Tap for Fitness & Enjoyment (Intermediate A)	Sat	10.30-11.30am	10 wks	£70	City Campus North Hanover St
Tap for Fitness & Enjoyment (Intermediate B)	Sat	11.30am-12.30pm	10 wks	£70	City Campus North Hanover St
HNC Sports Coaching	Mon	tbc	1 yr	£570	tbc

# School of





<b>Course Title</b>	<b>Day</b>	<b>Time</b>	<b>How long</b>	<b>Cost</b>	<b>Where</b>
<b>Access to Social Studies</b>	Mon or Thu	9am-5pm	36 wks	£680	Riverside Campus
<b>Health &amp; Social Care Level 2/3 (SVQ)</b>	Varies depending on units taken	Varies depending on units taken	Varies depending on units taken	On request	Riverside Campus/ Work Based
<b>CIH Level 4 Diploma: Housing Practice</b>	Thu	2-6pm	36 wks	£1030	City Campus Charles Oakley
<b>Counselling: Values and Principles of Practice</b>	Tue	6-9pm	12 wks	£130	Riverside Campus
<b>HNC Care and Administrative Practice</b>	Mon	9am-5pm	1 year	£1500	Riverside Campus
<b>Intro to Counselling (NQ)</b>	Tue	6-9pm	12 wks	£130	Riverside Campus
<b>Social Care (HNC)</b>	Tue & Thu	6-9pm	18 mths	£890	Riverside Campus
<b>Health and Social Care Supervision (PDA)</b>	Depends on units taken			£200 per unit	Riverside Campus

<b>Course Title</b>	<b>Day</b>	<b>Time</b>	<b>How long</b>	<b>Cost</b>	<b>Where</b>
<b>PDA Childhood Practice</b>	1 eve per wk	tbc	18 mths	£1,200	Riverside Campus

# We offer the following short courses

Please contact:

**City Enterprises** - Stuart McDowall: **0141 566 1561**

or the **School of Community, Care & Social Sciences** directly  
for more information and to discuss your needs: **0141 566 6222**.

## HSE Approved Courses:-

<b>Emergency First Aid</b>	A 6.5 hour HSE approved basic first aid course
<b>HSE First Aid at Work</b>	3 day HSE approved course
<b>HSE First Aid Refresher</b>	This 12 hour course is for revalidation of First Aid at Work Certification
<b>First Aid at Work annual update</b>	3 hour session that refreshes and updates current first aiders - recommended as good practice
<b>CPR Training</b>	This 2 hour course consists of basic life support and is aimed primarily at doctor and dental surgeries
<b>Moving &amp; Handling Training</b>	This 2 day course is aimed at care Sector Employees
<b>Moving &amp; Assisting Refresher Course</b>	6 hour refresher training for 2 day course

## CPD and Personal development for Health and Care Professions in a range of areas including:-

HIV, Hepatitis B & Hepatitis C infections	An Open Learning Unit
Catheter & Stoma Care	

## MCA Approved Courses:-

Elementary First Aid	STCW95 MCA approved basic first aid course
Medical First Aid	4 day STCW95 MCA approved course
Medical Care on Board Ship	5 day STCW95 MCA approved course
Medical Care Refresher	3 day STCW95 MCA approved course

School of







<b>Course Title</b>	<b>Day</b>	<b>Time</b>	<b>How long</b>	<b>Cost</b>	<b>Where</b>
Italian Beginner 1	Wed or Thu	6-9pm	10 wks	£105	City Campus Charles Oakley
Italian Beginner 2	Wed	6-9pm	10 wks	£105	City Campus Charles Oakley
Italian Beginner 3	Wed	6-9pm	10 wks	£105	City Campus Charles Oakley
French Beginner 1	Wed or Thu	6-9pm	10 wks	£105	City Campus Charles Oakley
French Beginner 2	Wed	6-9pm	10 wks	£105	City Campus Charles Oakley
French Beginner 3	Wed	6-9pm	10 wks	£105	City Campus Charles Oakley
Spanish Beginner 1	Wed or Thu	6-9pm	10 wks	£105	City Campus Charles Oakley
Spanish Beginner 2	Wed	6-9pm	10 wks	£105	City Campus Charles Oakley
Spanish Beginner 3	Wed	6-9pm	10 wks	£105	City Campus Charles Oakley
Italian Continuing 1	Tue	6-9pm	10 wks	£105	City Campus Charles Oakley
Italian Continuing 2	Tue	6-9pm	10 wks	£105	City Campus Charles Oakley

<b>Course Title</b>	<b>Day</b>	<b>Time</b>	<b>How long</b>	<b>Cost</b>	<b>Where</b>
Italian Continuing 3	Tue	6-9pm	10 wks	£105	City Campus Charles Oakley
French Continuing 1	Tue	6-9pm	10 wks	£105	City Campus Charles Oakley
French Continuing 2	Tue	6-9pm	10 wks	£105	City Campus Charles Oakley
French Continuing 3	Tue	6-9pm	10 wks	£105	City Campus Charles Oakley
Spanish Continuing 1	Tue	6-9pm	10 wks	£105	City Campus Charles Oakley
Spanish Continuing 2	Tue	6-9pm	10 wks	£105	City Campus Charles Oakley
Spanish Continuing 3	Tue	6-9pm	10 wks	£105	City Campus Charles Oakley
British Sign Language Level 1	Thu	6-8.30pm	24 wks	£310	City Campus Charles Oakley
British Sign Language Level 2	Wed	6-8.30pm	37 wks	£410	City Campus Charles Oakley
Activate your English	Mon	tbc	16 Wks	£2,530	City Campus Charles Oakley
Basic ESOL Teacher Training	Wed	6-9pm	6 wks	£120	City Campus Charles Oakley



Course Title	Day	Time	How long	Cost	Where
ESOL Access 2 & Citizenship Stage 1	Mon - Fri	9am-12.15pm or 1.15-4.30pm	1 yr	On Request	City Campus
	Tue, Wed or Thu	6-8pm			
ESOL Access 2 & Citizenship Stage 2	Mon - Fri	9am-12.15pm or 1.15-4.30pm	1 yr	On Request	City Campus
	Tue, Wed or Thu	6-8pm			
ESOL Access 2 & Citizenship Stage 3	Mon - Fri	9am-12.15pm or 1.15-4.30pm	1 yr	On Request	City Campus
	Tue, Wed or Thu	6-8pm			
ESOL Access 3 & Citizenship	Mon - Fri	9am-12.15pm or 1.15-4.30pm	1 yr	On Request	City Campus
	Tue, Wed or Thu	6-8pm			

<b>Course Title</b>	<b>Day</b>	<b>Time</b>	<b>How long</b>	<b>Cost</b>	<b>Where</b>
<b>ESOL Intermediate 1, Stage 1 &amp; Citizenship</b>	Mon - Fri	9am-12.15pm or 1.15-4.30pm	1 yr	On Request	City Campus
	Tue, Wed or Thu	6-8pm			
<b>ESOL Intermediate 1, Stage 2 &amp; Citizenship</b>	Mon - Fri	9am-12.15pm or 1.15-4.30pm	1 yr	On Request	City Campus
	Tue, Wed or Thu	6-8pm			
<b>ESOL Intermediate 2 Stage 1</b>	Mon - Fri	9am-12.15pm or 1.15-4.30pm	1 yr	On Request	City Campus
	Tue, Wed or Thu	6-8pm			
<b>ESOL Intermediate 2 Stage 2</b>	Mon - Fri	9am-12.15pm or 1.15-4.30pm	1 yr	On Request	City Campus
	Tue, Wed or Thu	6-8pm			

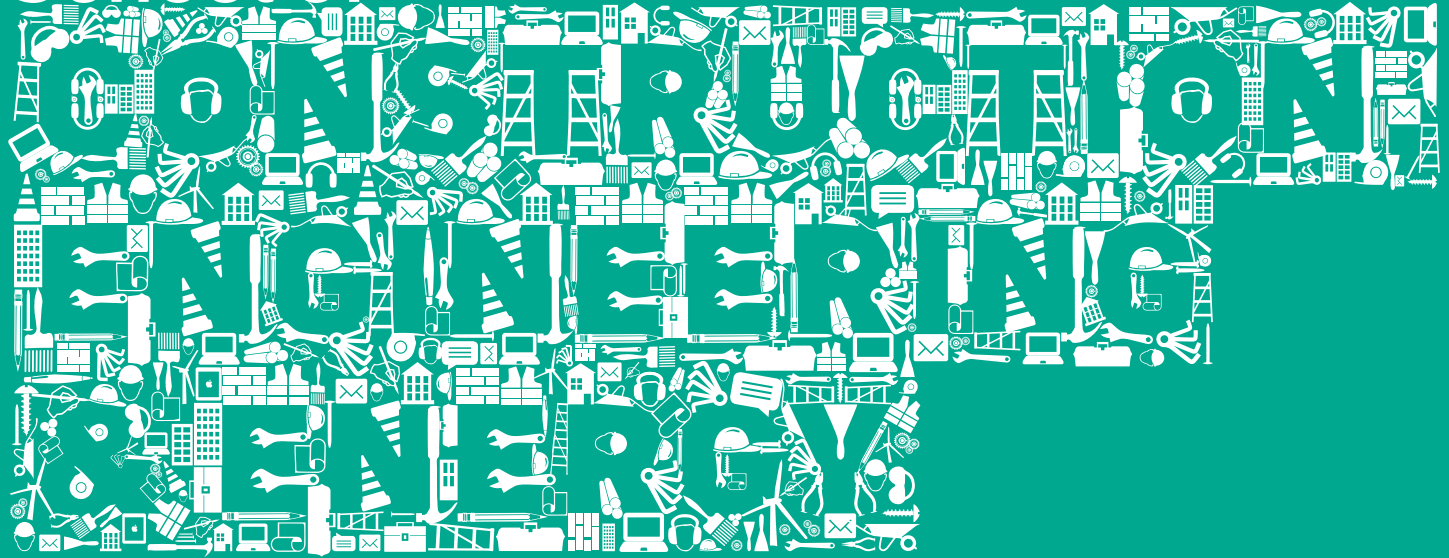
Course Title	Day	Time	How long	Cost	Where
ESOL Beginner and Elementary	Sat	9.30am-12.30pm	28 wks	On Request	City Campus Townhead
ESOL Pre-Intermediate & above	Sat	9.30am-12.30pm	28 wks	On Request	City Campus Townhead
ESOL Higher	Mon - Fri	9am-12.15pm or 1.15-4.30pm	1 yr	On Request	City Campus
	Tue, Wed or Thu	6-8pm			
ESOL Citizenship Preparation	Thu, Fri or Sat	Various	6 wks	£55	City Campus Townhead
ESOL Literacies	Mon - Thu	9-12am.15pm	1 yr	On Request	City Campus Townhead
ESOL Writing	Sat	9.30am-12.30pm	28 wks	On Request	City Campus Townhead





Course Title	Day	Time	How long	Cost	Where
IELTS Exam Preparation	Thu	6-9pm	8 wks	£324	City Campus
	Fri	1-4pm			
	Sat	9.15am-12.15pm			
FCE Exam Preparation	Tue	6-9pm	12 wks	£324	City Campus
	Fri	1-4pm			
	Sat	9.15am-12.15pm			
CAE Exam Preparation	Wed	6-9pm	12 wks	£324	City Campus
	Fri	1-4pm			
	Sat	9.15am-12.15pm			
CPE Exam Preparation	Thu	6-9pm	12 wks	£324	City Campus
	Fri	1-4pm			
	Sat	9.15am-12.15pm			

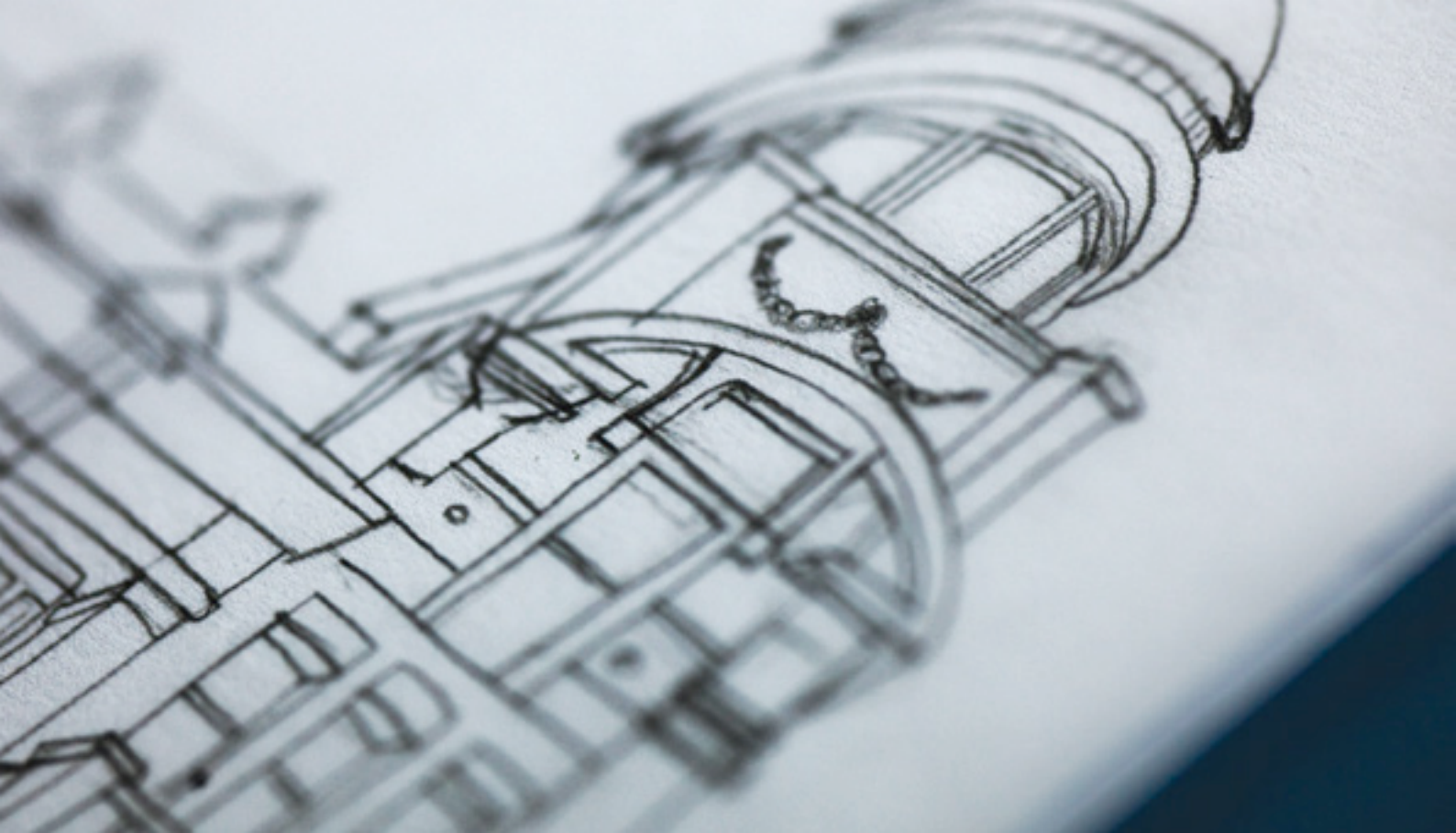
School of





Course Title	Day	Time	How long	Cost	Where
ACS Domestic Gas Safety Training/ Assessment/Re-Assessment	Various	as required	As required	£320	City Campus North Hanover St/ City Campus Townhead
Advanced Certificate Plasterwork (PDA Level 7)	10 wks in College	8.30am- 4.30pm	1 yr	£840	Rogart Street Building
Advanced Certificate Stonemasonry	10 wks in College	8.30am- 4.30pm	1 yr	£840	Rogart Street Building
Architectural Technology (HNC)	Mon	9am-4.30pm	41 wks	£600	City Campus North Hanover St
Built Environment (NC)	Tue or Wed	9am-4.30pm	41 wks	£450	City Campus North Hanover St
CAD: 2D1 (Unit No DW1E34)	Tue	6-9pm	11 wks	£140	City Campus North Hanover St
CAD: 3D Modelling (Unit No DW1334)	Wed	6-9pm	22 wks	£270	City Campus North Hanover St
CAD: Architectural 1 (Unit No DW1D34)	Thu	6-9pm	11 wks	£140	City Campus North Hanover St

Course Title	Day	Time	How long	Cost	Where
Construction Management (HNC)	Mon or Fri	9am-4.30pm	41 wks	£600	City Campus North Hanover St
	2 Eves: Tue & Wed	6-8.30pm			
Decorative Painting, Graining & Marbling	Tue	6-9pm	10 wks	£130	City Campus North Hanover St
Floorcovering Occupations (SVQ) (Level 3)	19 wks in College	8.30am- 4.30pm	4 yrs	On Request	Rogart Street Building
Gas Installation and Maintenance (SVQ) (Level 3)	Block Release	9am-4.30pm	3 yrs	£1,370	City Campus North Hanover St
IOSH Directing Safely (group bookings only)	as required	9am-4.30pm	1 day	£190	City Campus North Hanover St
IOSH Managing Safely	as required	9am-4.30pm	4 days	£550	City Campus North Hanover St



Course Title	Day	Time	How long	Cost	Where
NEBOSH National General Certificate in Occupational Safety & Health	Wed (eve)	5.30-8.30pm	30 eves	£775	City Campus Townhead
	Wed (day)	1-8pm	14 Days	£975	
Plastering (SVQ) (Level 3)	19 wks in college	8.30am-4.30pm	4 yrs	On Request	Rogart Street Building
Quantity Surveying (HNC)	Mon	9am-4.30pm	41 wks	£600	City Campus North Hanover St
REHIS Elementary Health & Safety	Tue or Wed	9.15am-4.30pm	1 day	£85	City Campus Townhead
Repairing Traditional Buildings	2 days as required	9am-4.30pm	2 days	£210	Rogart Street Building
Stone Cutting & Setting Out	2 days as required	9am-4.30pm	2 days	£210	Rogart Street Building
Stonemasonry (SVQ) (Level 3)	19 wks in college	8.30am-4.30pm	4 yrs	On request	Rogart Street Building

<b>Course Title</b>	<b>Day</b>	<b>Time</b>	<b>How long</b>	<b>Cost</b>	<b>Where</b>
<b>Taking Care of Older Buildings</b>	Tue	6-9pm	10 wks	£170	City Campus North Hanover St
<b>Traditional Building Materials</b>	2 days as required	9am-4.30pm	2 days	£210	Rogart Street Building
<b>Wall and Floor Tiling (SVQ) (Level 3)</b>	19 wks in college	8.30am-4.30pm	4 yrs	On request	Rogart Street Building
<b>Working with Lime Mortars</b>	2 days as required	9am-4.30pm	2 days	£210	Rogart Street Building







# We also offer the following Engineering courses

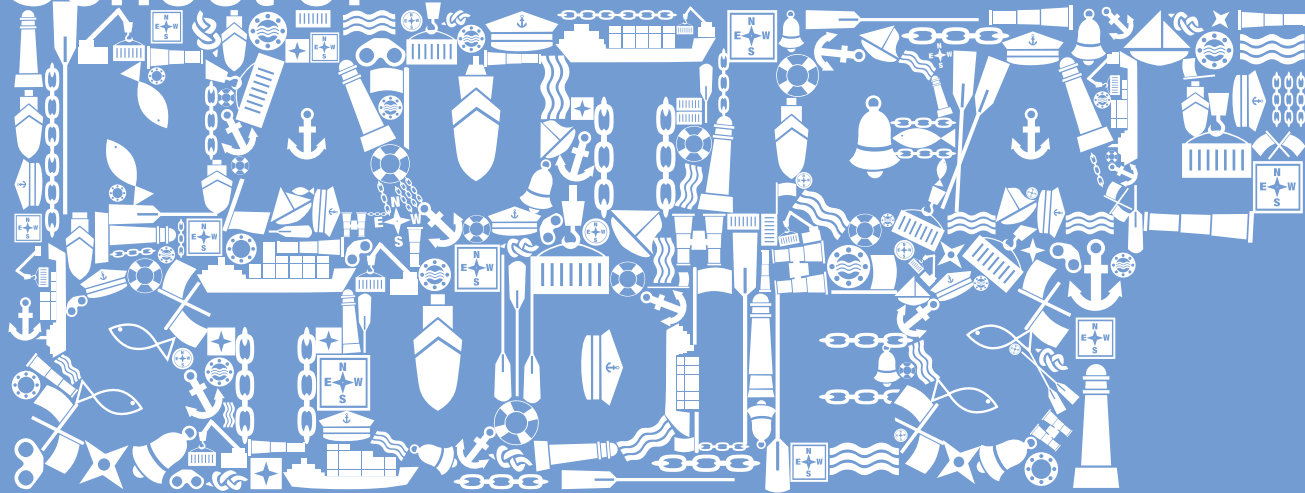
For further details please go to our website.

Auxilliary Course for HNC Marine Engineering	MCA Certificate Course (Distance Learning)
Auxilliary Course for NC Shipping & Marine Operations Level 5	Graduate Workshop Engineering
MNTB Boiler and Evaporator Course	Auxilliary Course for HND Marine Engineering (inc Scot Prof Dip)
PDA Marine Management 5/5	SVQ E00W Prep & Portfolio Assess Level 3
Auxilliary Course for PDA Marine Engineering 5/5	Maths - Distance Learning
MCA Approved 30 Hour Engine Course	HNC Electronics
MCA First Class Engineer Engineering Knowledge	HNC Mechanical Engineering
MCA Class 1 Part A Engineering	HNC Electrical Engineering
MCA Class 1 Part B Engineering	HND Electrical Engineering
MCA Class 2 Engineering Knowledge	HND Mechanical Engineering

EOW & IAMI Examination Preparation and Record Book Guide	Maths for Engineering (Distance Learning)
Maths for Nautical - Deck Cadets	Marine Supplementary Workshop
HELM (Management)	High Voltage (Management)
HELM (Operational)	High Voltage (Operational)



# School of





# Nautical Studies offer the following courses

For further details please go to our website or email [maritime@cityofglasgowcollege.ac.uk](mailto:maritime@cityofglasgowcollege.ac.uk)

Class 1 Masters Orals	Advanced Tankers Courses (Chemical, Oil and Gas)
Class 2 Post HND Course	Bridge Team Training
Class 2 Chief Mates Orals	Certificate of Proficiency in Survival Craft and Rescue Boats
Class 2 Chief Mates Writtens	MCA Electronic Chart Display and Information System (ECDIS)
Officer of the Watch Post HND	MCA Efficient Deck Hand
Bridge Resource Management	STW Global Maritime Distress and Safety Systems (GMDSS)
Tanker Management	STW NAV Radar & ARPA Operational
Marine MNTB Hand Skills	STW Personal Safety & Social Responsibility
Outward Bound Leadership Course	MCA Personal Survival Techniques
PDA Marine Management	STW Safety Officers Course
Scottish Professional Diploma Orals Preparation Course	STW Ships Security Officer



HELM (Management)	STW Tanker Familiarisation
GMDSS Restricted Operators Course	Training Record Book & Registration
Small Ships Navigation & Radar Course	MCA Signals Exam
Enclosed Space Entry Course	NAEST Ops Theory
Advanced Ship Handling	NAEST (Management)

# City of Glasgow College **CAMPUSES/BUILDINGS**

---

**1** City Campus North Hanover St,  
60 North Hanover Street,  
Glasgow, G1 2BP  
t: 0141 566 6222

**2** City Campus Charles Oakley,  
300 Cathedral Street,  
Glasgow, G1 2TA  
t: 0141 552 3941

**3** City Campus Townhead,  
230 Cathedral Street,  
Glasgow, G1 2TG  
t: 0141 566 6222

**4** Riverside Campus,  
21 Thistle Street,  
Glasgow, G5 9XB  
t: 0141 565 2500

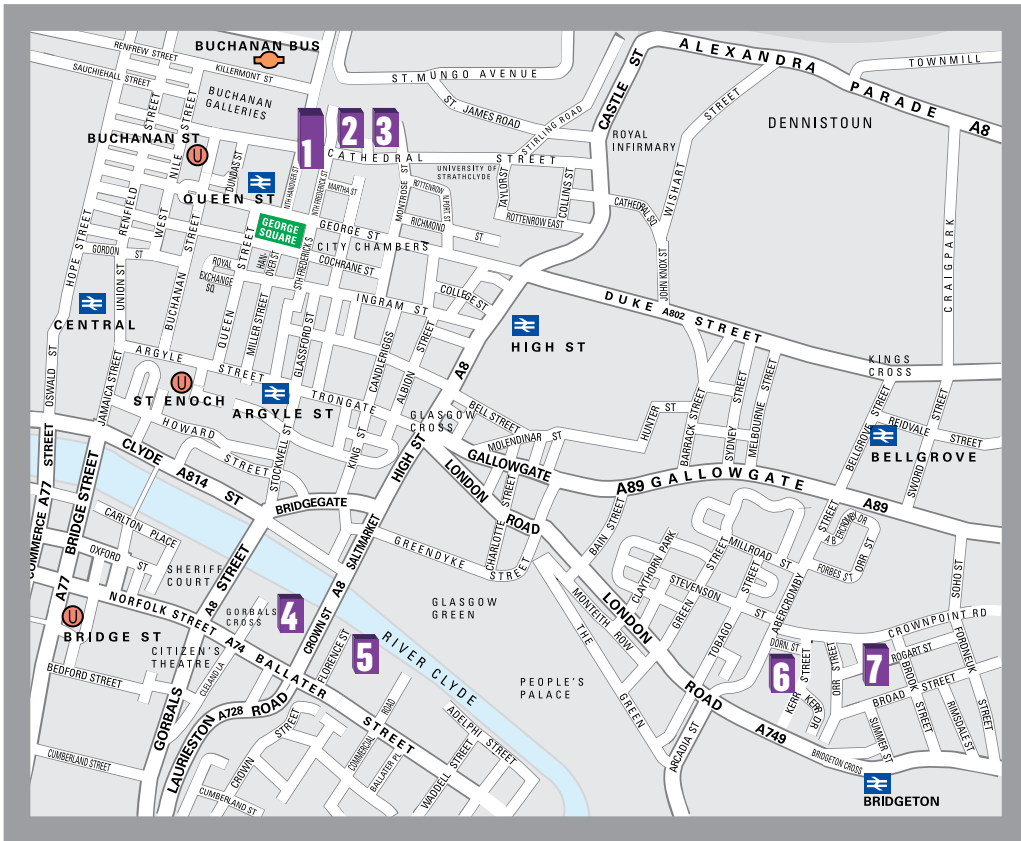
**5** Florence Street Building,  
5 Florence Street,  
Glasgow, G5 0VX  
t: 0141 566 6222

**6** Dornoch Street Building,  
Dornoch Street,  
Glasgow, G40 2QT  
t: 0141 566 6222

**7** Rogart Street Building,  
4 Rogart Street,  
Glasgow, G40 2AA  
t: 0141 566 6222

---

**HOW TO FIND US** ►



**Main Office:**

City Campus North Hanover Street  
60 North Hanover Street, Glasgow G1 2BP

[www.cityofglasgowcollege.ac.uk](http://www.cityofglasgowcollege.ac.uk)

t: 0141 566 6222



Scottish Charity number SC036198