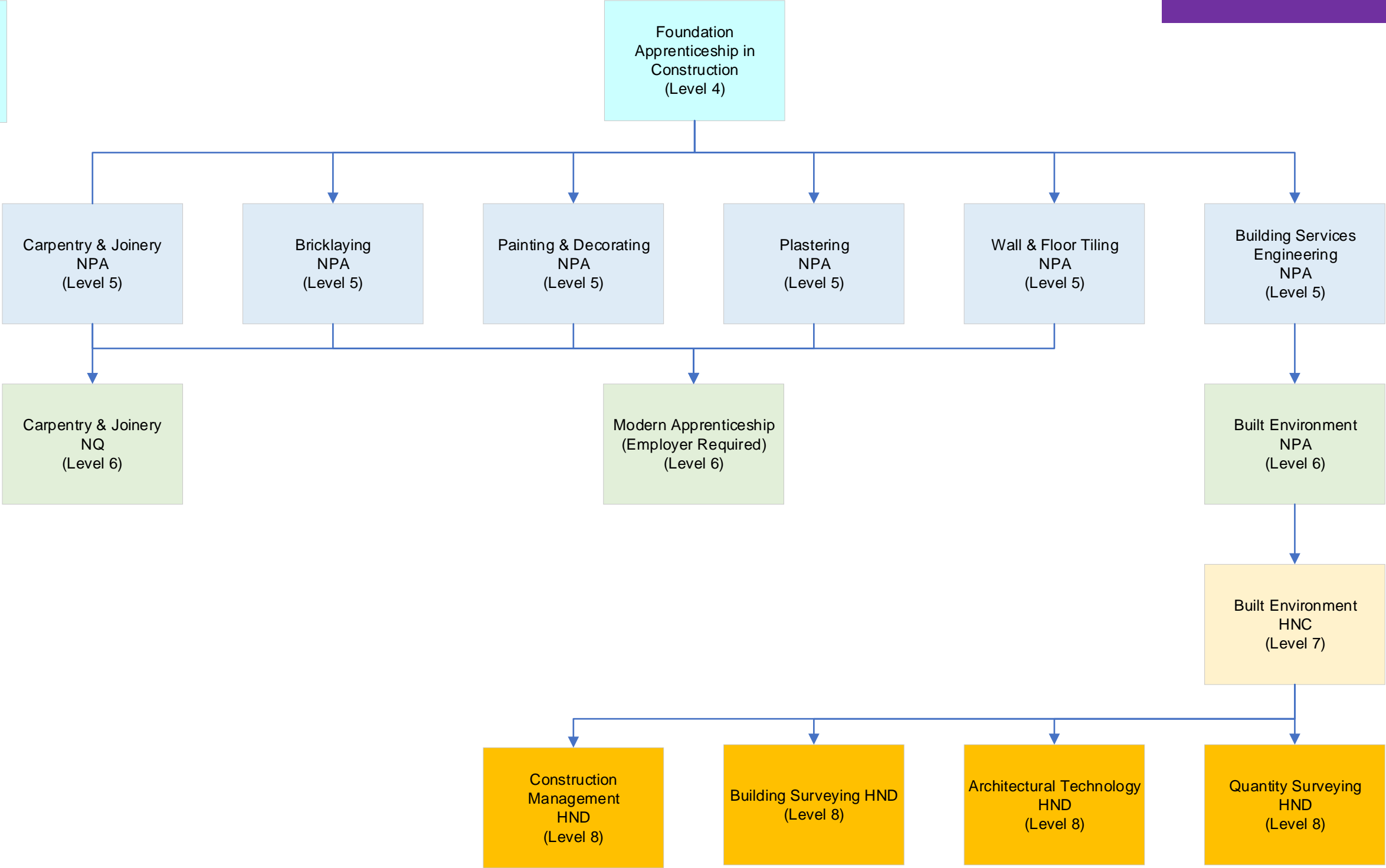


Note: you can progress directly to level 6 courses with additional qualifications.



Glasgow Caledonian University
 BSc (Hons) Construction Management
 BSc (Hons) Environmental Civil Engineering
www.gcu.ac.uk

Robert Gordon University
 BSc (Hons) Quantity Surveying and Commercial Management
www.rgu.ac.uk

Heriot Watt University
 BSc (Hons) Construction and the Built Environment
 BSc (Hons) Quantity Surveying and Commercial Management
www.hw.ac.uk

Edinburgh Napier University
 BSc (Hons) Construction & the Built Environment (Graduate Apprenticeship)
www.napier.ac.uk

Note: All courses are subject to change