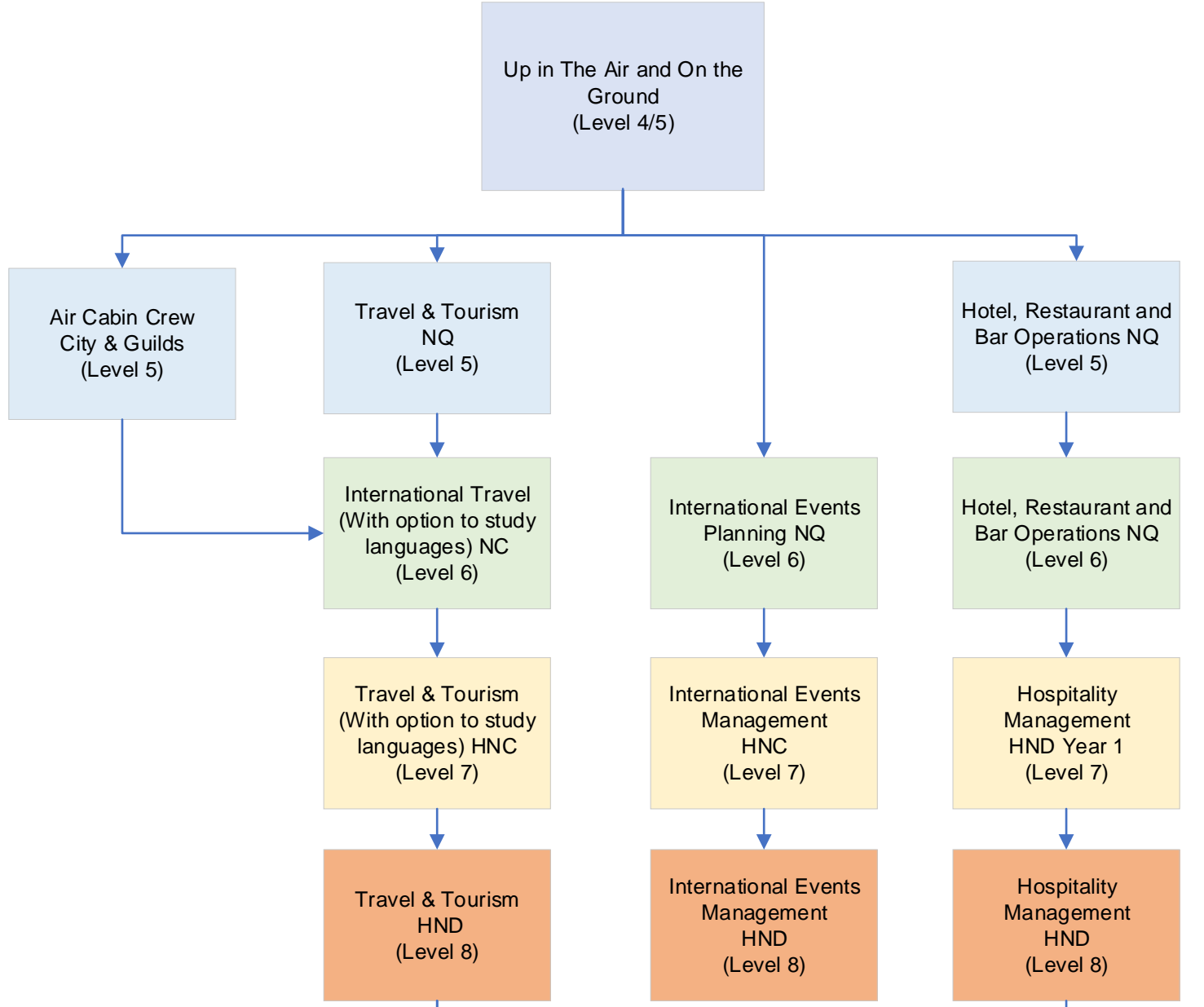


Note: You can progress directly to HNC if you hold one Higher at C or above in English, History or Business Management.



<p><b>University of the West of Scotland</b></p> <p>Direct Entry to 3<sup>rd</sup> Year with 2 C grades in HND (Level 10) BA (Hons) International Tourism and Events Management</p> <p><a href="http://www.uws.ac.uk">www.uws.ac.uk</a></p>	<p><b>Queen Margaret University</b></p> <p>Direct Entry into 4<sup>th</sup> year (Level 10) BA (Hons) International Hospitality, Events and Tourism</p> <p><a href="http://www.qmu.ac.uk">www.qmu.ac.uk</a></p>	<p><b>Glasgow Caledonian University</b></p> <p>Direct Entry to 3<sup>rd</sup> Year with 2 B grades in HND (Level 10) BA (Hons) International Tourism and Events Management Pathway</p> <p><a href="http://www.gcu.ac.uk">www.gcu.ac.uk</a></p>
---	---	--

Note: All courses are subject to change

