

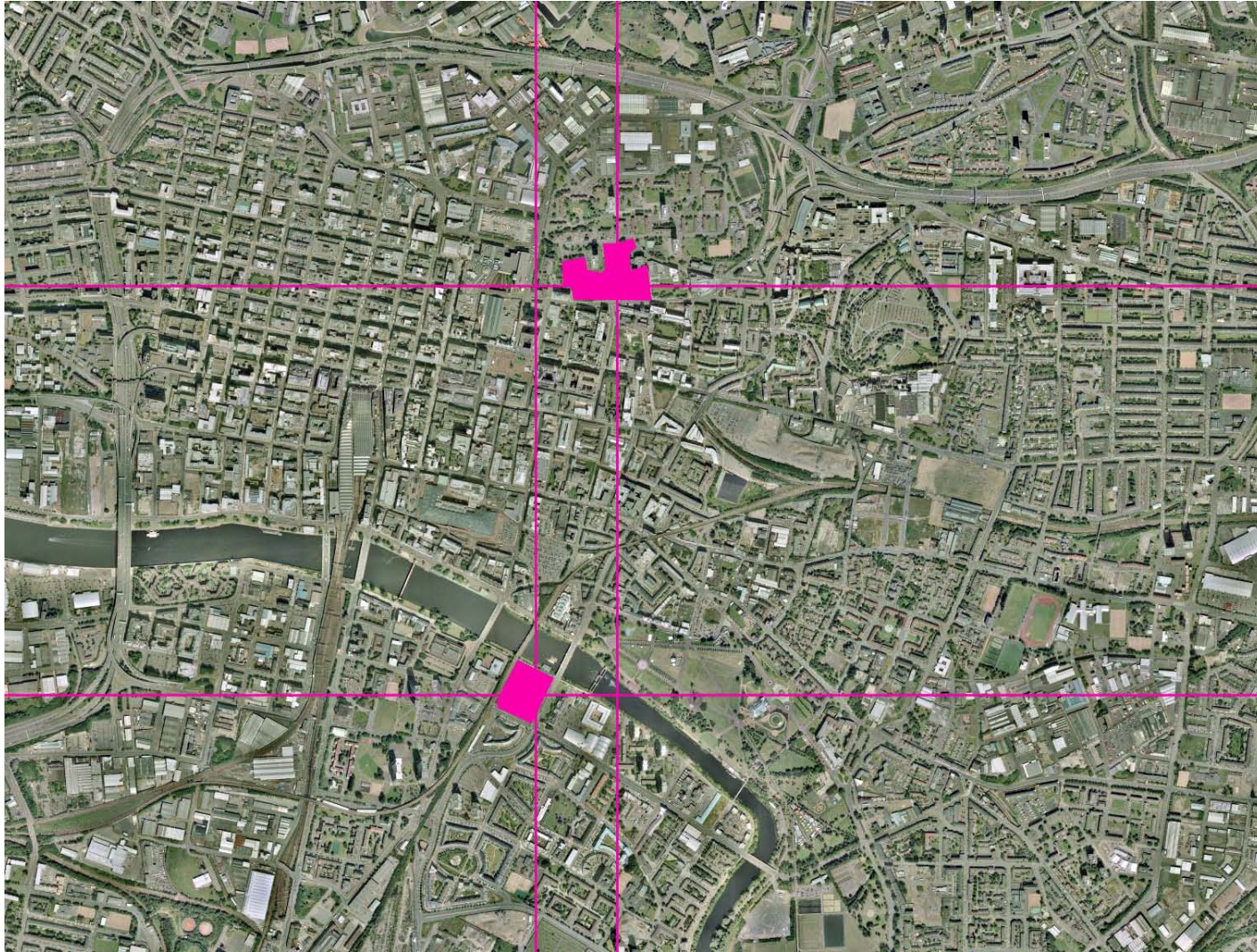


# Welcome to City of Glasgow College **City Campus**



External Entrance from Cathedral Street

## One Project: Two Campuses



### Beacons of educational excellence

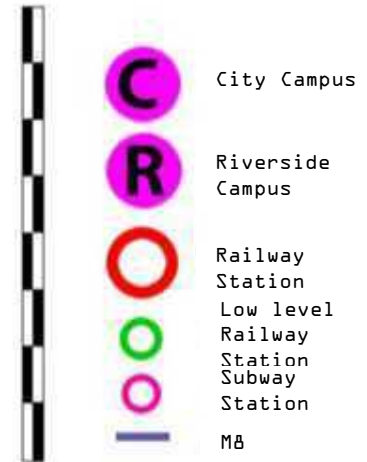
Both the City and Riverside Campuses take full advantage of their prominent sites in Glasgow.

The high-quality buildings will welcome students from across Glasgow and beyond.

The City Campus (north) and Riverside Campus (south)

City Campus

# One Project: Two Campuses



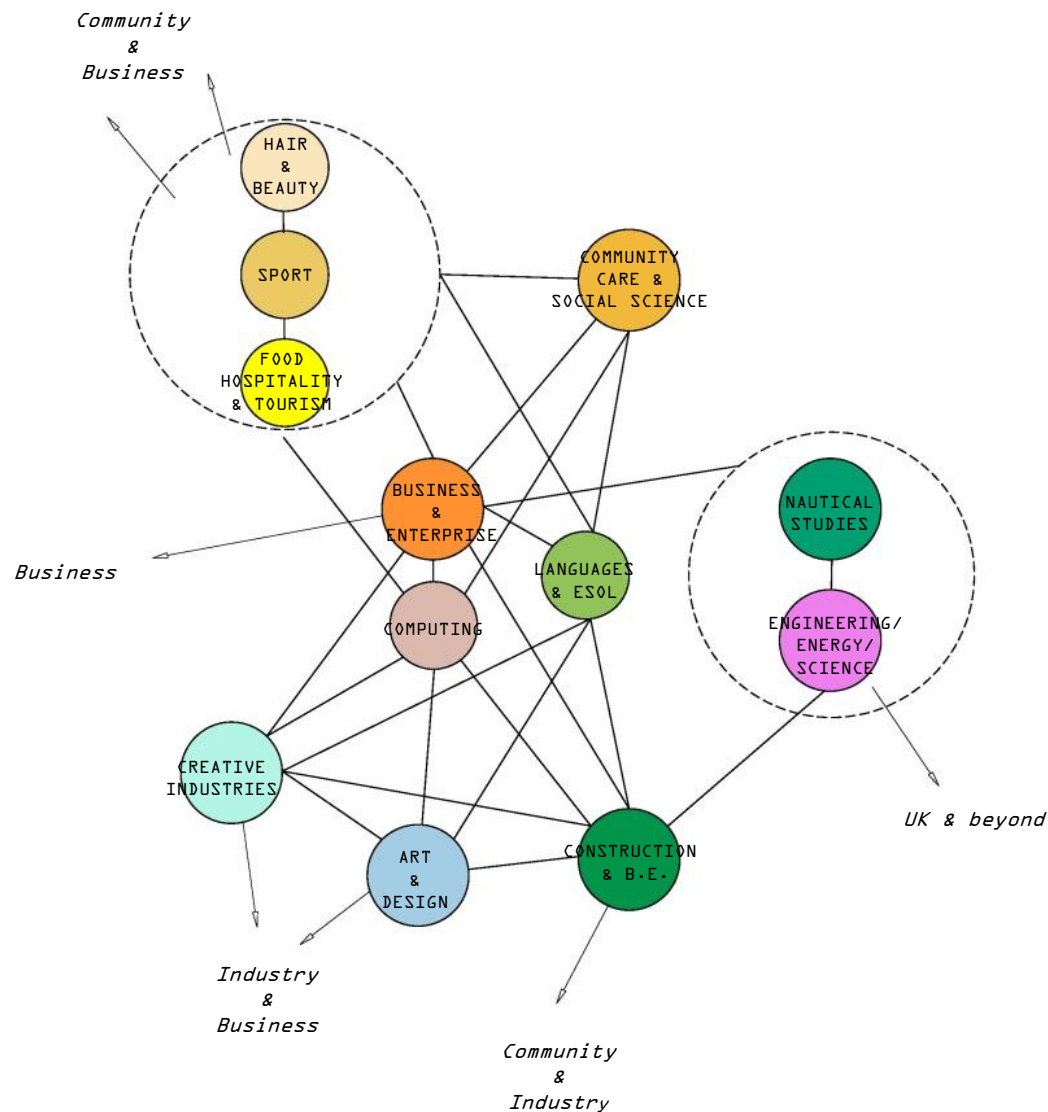
1/4 mile = 10 minute walk approx.



The Walking City

City Campus

# Project Brief: Delivering the Curriculum

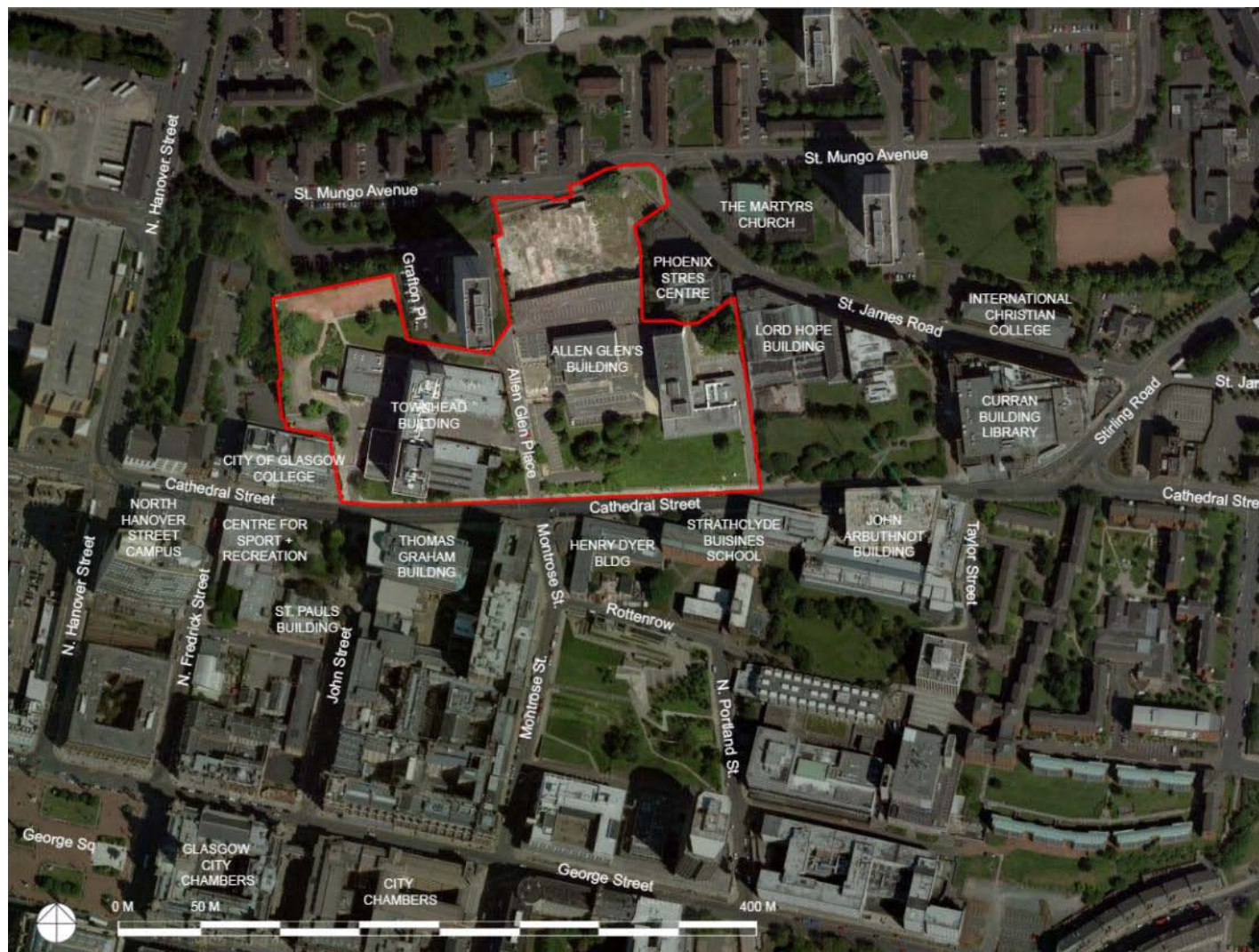


Our designs for the City of Glasgow College have focused on creating facilities that help the College deliver their curriculum.

Our focus is to create inspiring spaces with learning opportunities for all.

- The new City of Glasgow College will provide -
- A World Class Teaching Facility
- 71,000 sqm of Accommodation over 2 Campuses
- An Inclusive Development
- A Community Facility
- Dedicated Specialist Teaching Areas
- "A" Rated Sustainable Development
- A Flexible Design
- Public Spaces
- Connections & Links to the City

The Twelve School Diagram



## Key Strategy Drivers

- Overcoming the current disparate physical arrangement of ten separate academic buildings on eight different sites.
- Ensuring that the new estate is accessible to all.
- A bespoke design that will deliver a high quality learning environment.
- Be developed at a density that will realise economies of scale, improve efficiency through improved utilisation and create a vibrant learning environment.
- Maximises collaboration opportunities arising from adjacency of schools with common space requirements.
- Meet City of Glasgow College's aspiration to be an exemplar of sustainable design and play a key role in delivering the Sustainable Glasgow Strategy.

Existing City Campus Site

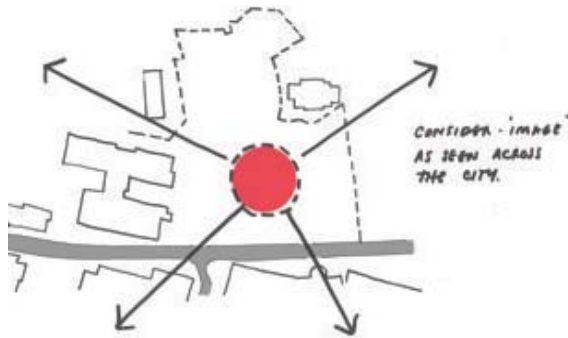
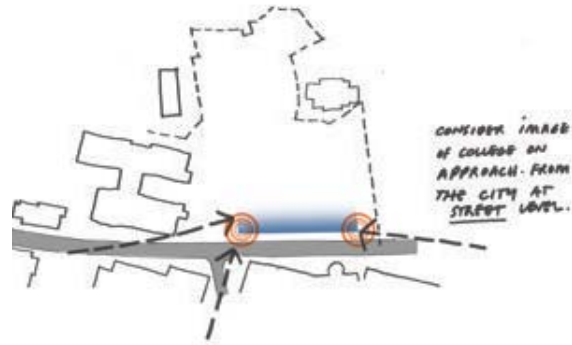


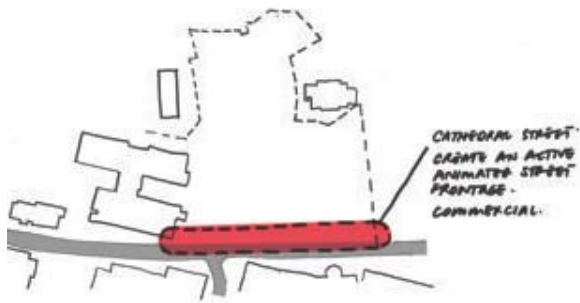
Image in the City



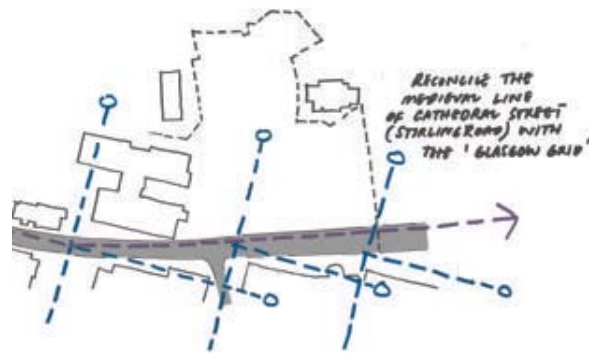
Approach at Street Level



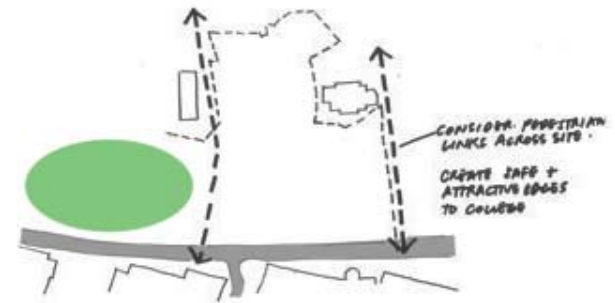
Topography



Street Edge & Frontage

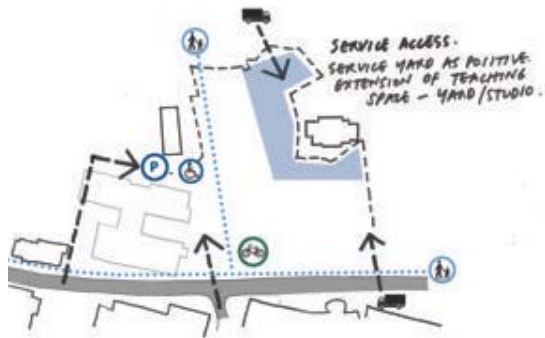


Medieval City & Glasgow Grid

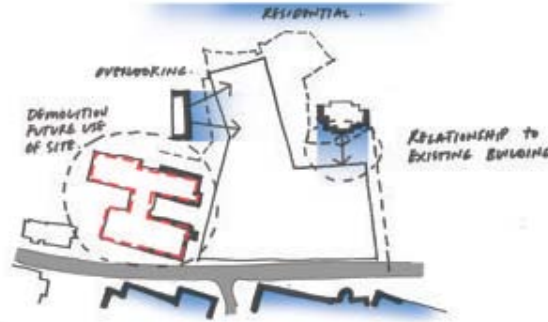


Routes Across the Site

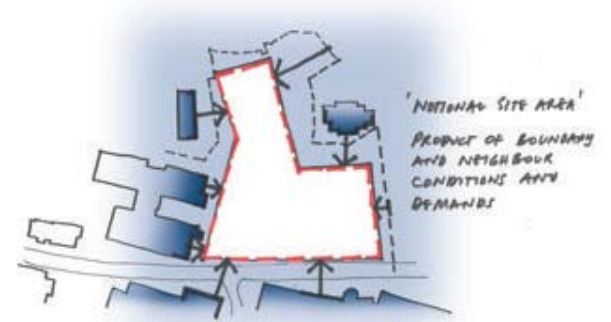




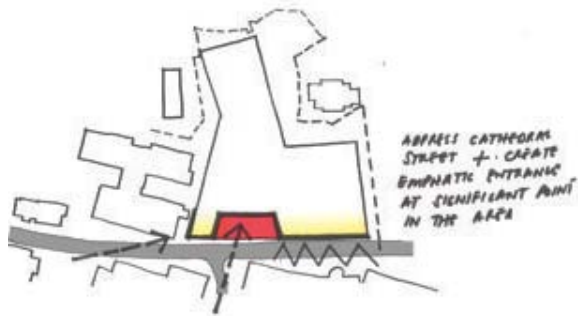
Access & Servicing



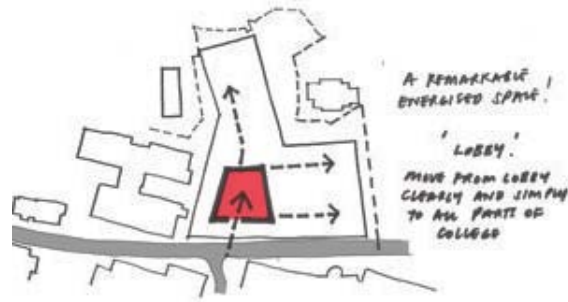
Edges & Relationships



The Notional Site



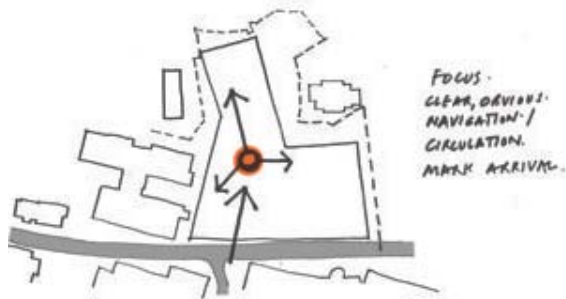
Grand Entrance



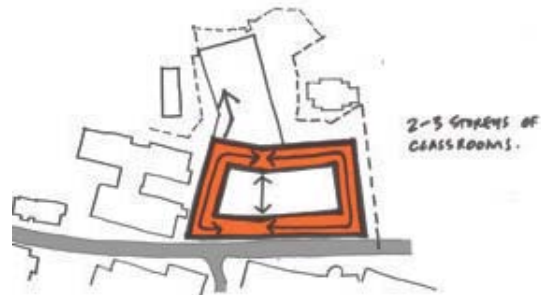
Vibrant Space



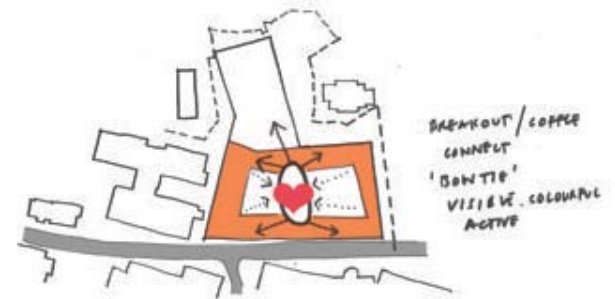
Concealed Courtyard



Focal Point



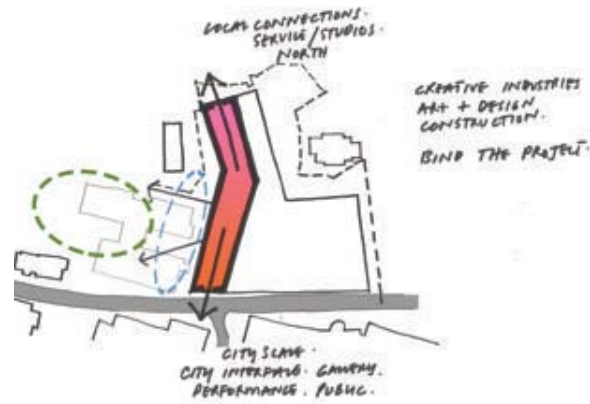
Clarity of Circulation



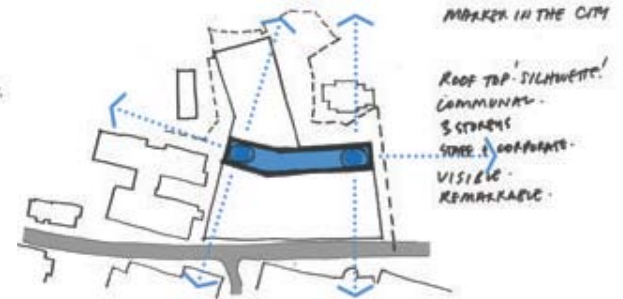
Special Place



Appropriate Scale



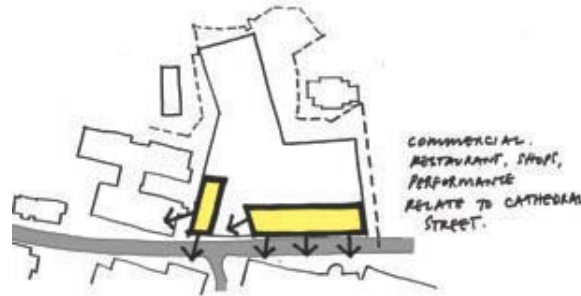
Linking Crescent addresses new Park



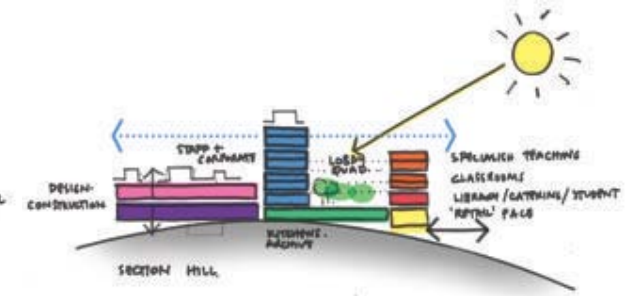
Beacon to the City



Rational Form



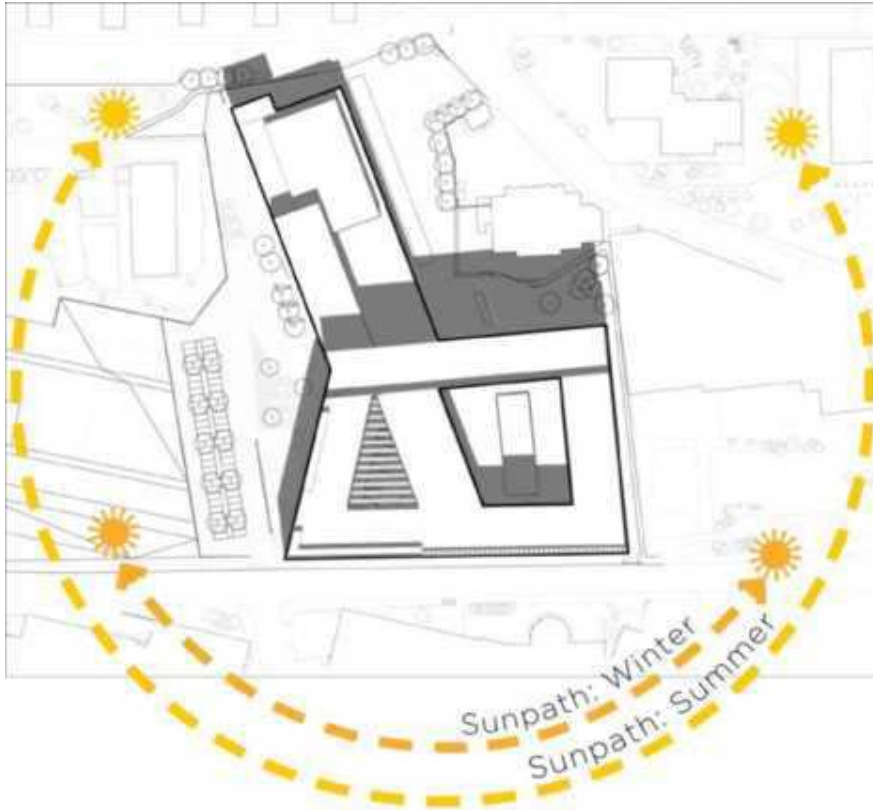
Shop Window to the City



Section Idea

# Site Analysis: responding to the environment

**Technical Analysis** of the site enables a considered design response to be developed. For instance the colonnaded facade is deliberately deepened to provide solar shading to the teaching spaces on the east, south and west facades.



**Noise analysis** - Acoustic surveys of the site have been undertaken to establish site conditions. This information has informed the location of opening windows and the wider ventilation strategy for the building.



**Noise analysis:** predicted levels +1.5m above ground level



**Noise analysis:** predicted levels +14.0m above ground level

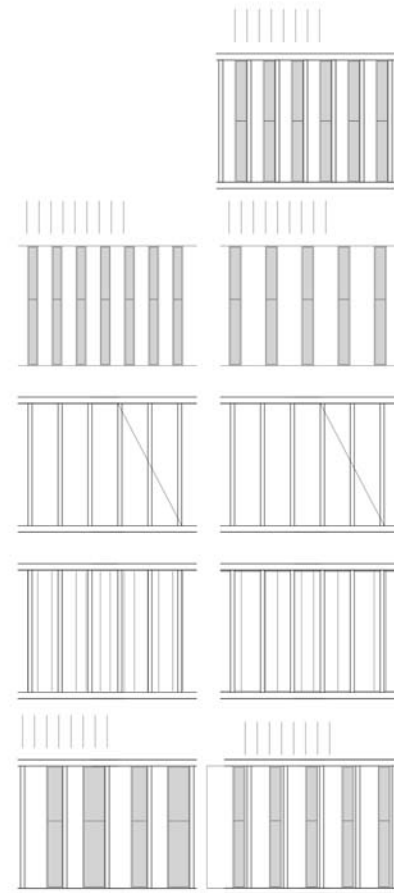
# Historical Analysis: A Tradition of Rigour

Glasgow has a fine tradition of rigorous, rhythmically repetitive buildings inspired by the city's mercantile grid expressed as elegant and finely proportioned columnar facades and string courses.

We have emulated this tradition with the composition of carefully proportioned facades that project a feeling of civicness, whilst admitting lots of daylight and providing solar shading, external terrace opportunities and maintenance access.



Ca' D'Oro Building, Glasgow, by John Honeyman



Proposed College proportional Elevation Study

## Precedent: An elegant proportion repeated



**Gardner Warehouse** Glasgow by John Baird & R. McConnell



**Egyptian Halls** Glasgow by Alexander 'Greek' Thomson



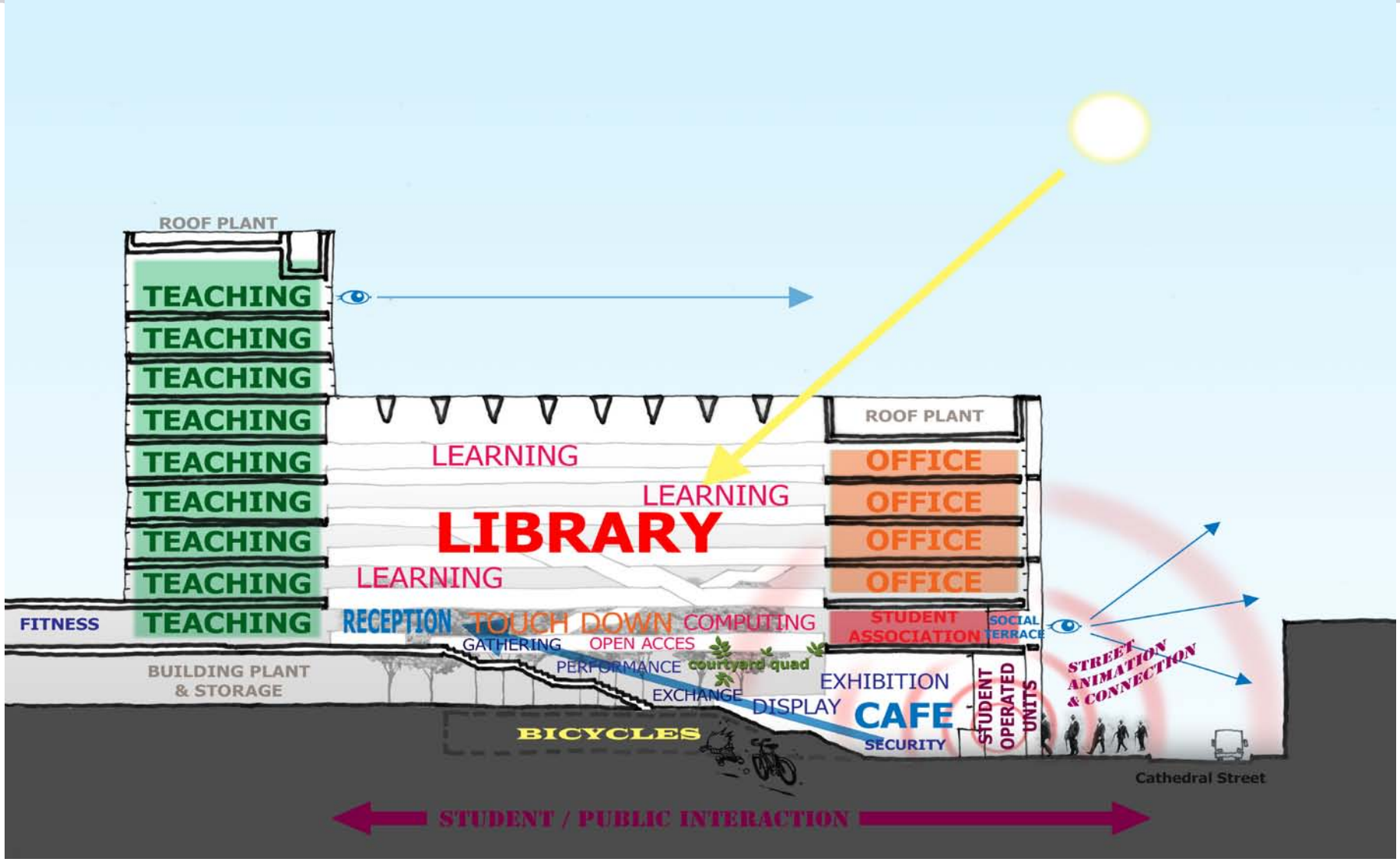
**Novartis Office Building** Basel by Peter Markli Architects



**Museum of Modern Literature** Marbach, David Chipperfield Architects



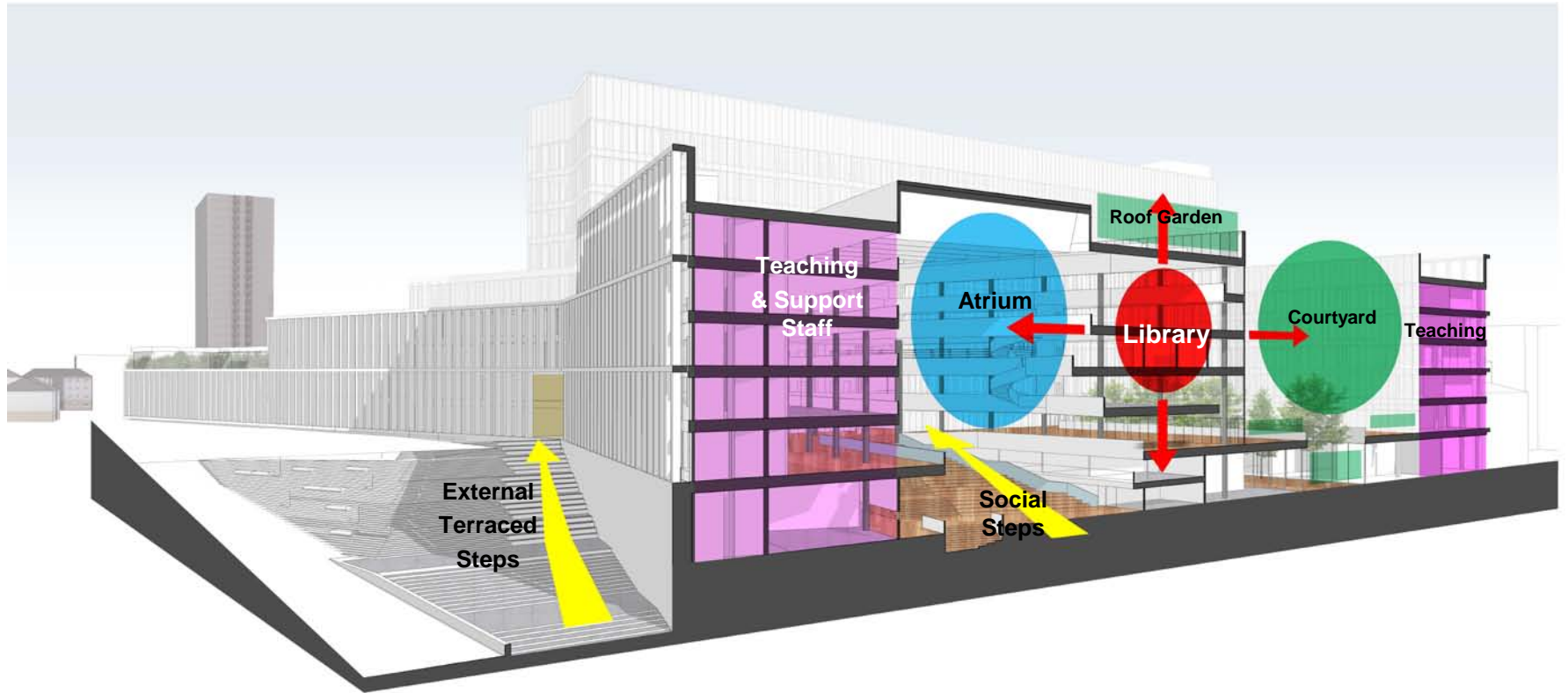
# Concept Development: the atrium as a vibrant place to be



## A Sectional Idea

A modern college campus, enlivened by teaching, learning, social and display areas, with direct connections to the city Street

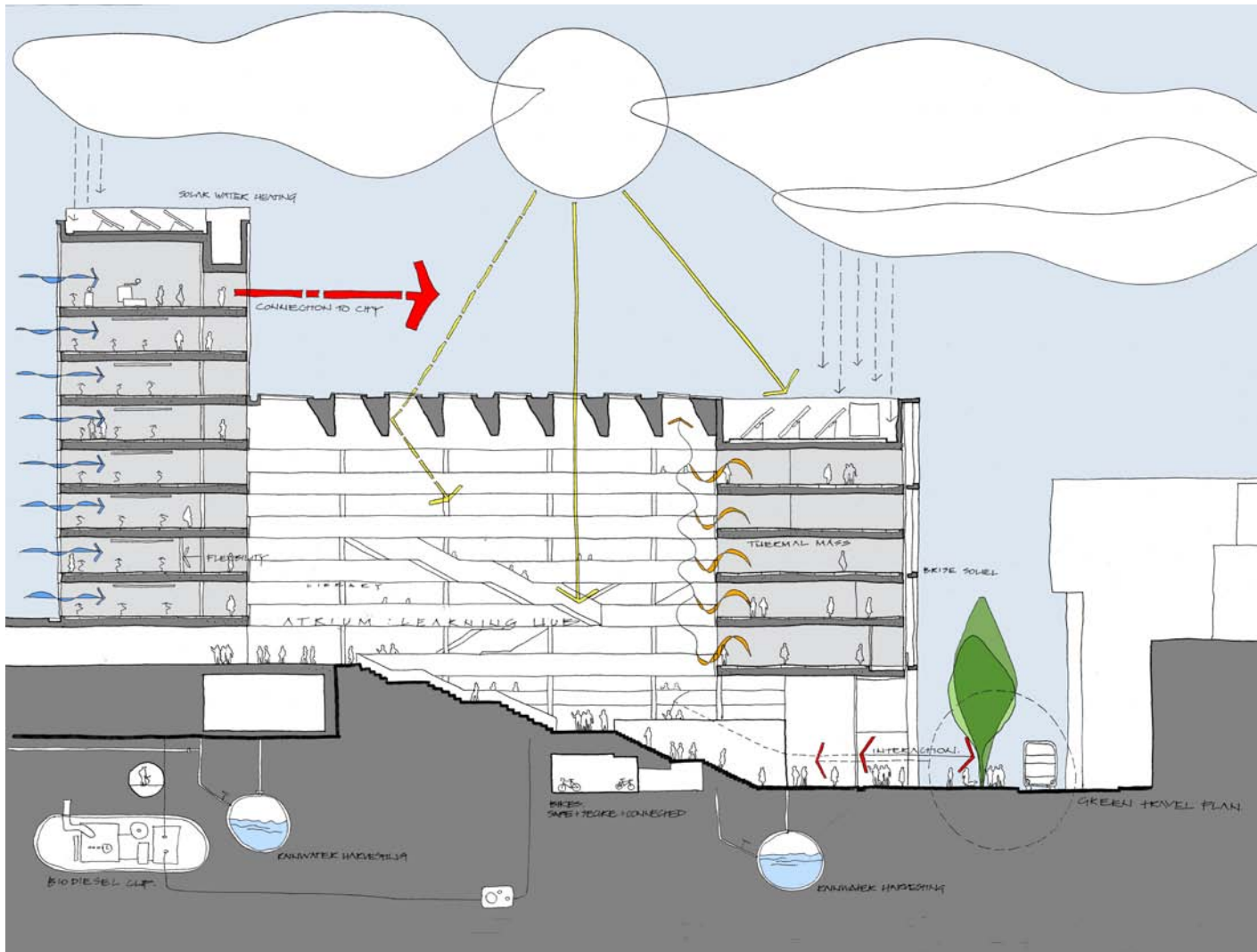
# Concept Development: the library at the heart



## A Sectional Idea

The Library at the heart of the campus

## Concept Development: Sustainability

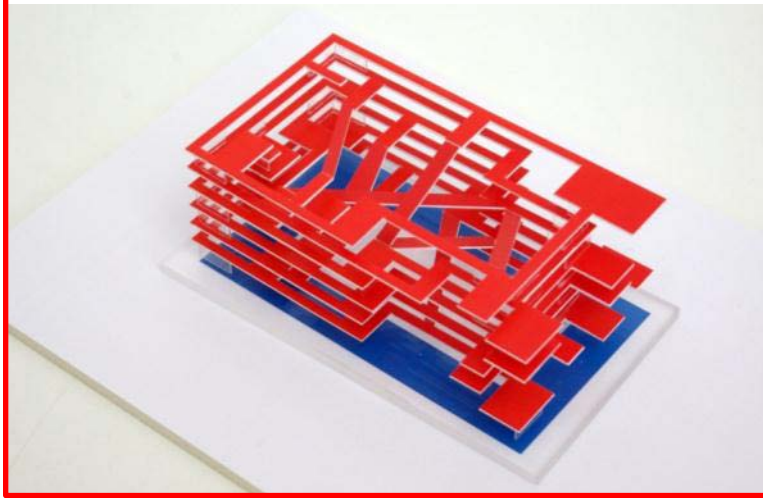
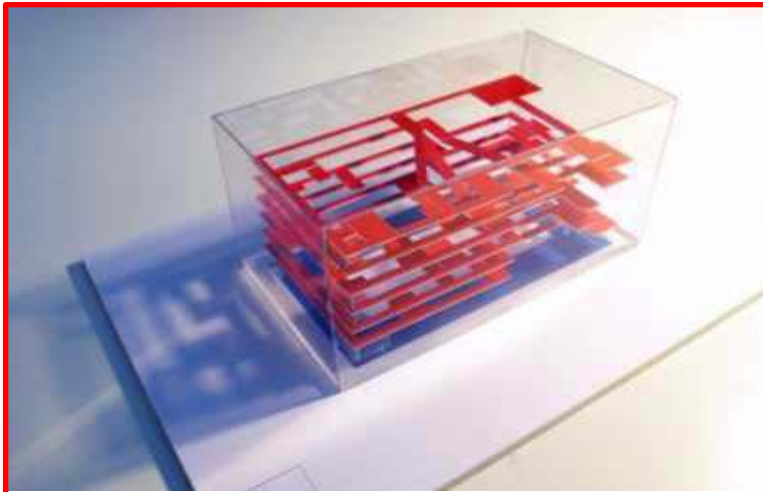


**An integrated approach that ensures passive low energy design contributes to the comfort and well-being of students and teaching staff**

- BREEAM Excellent
- EPC 'A' rated
- Structural solution uses thermal mass in teaching areas throughout
- Opening Windows
- Natural Ventilation
- Flexible services; raised floor access for low energy displacement ventilation
- CHP acting as lead boiler
- Heat recovery system
- Solar thermal collection to DHW pre-heat
- PVs integrated with the LV distribution system
- Rainwater harvesting
- Enhanced cyclist facilities

### Sustainable Design

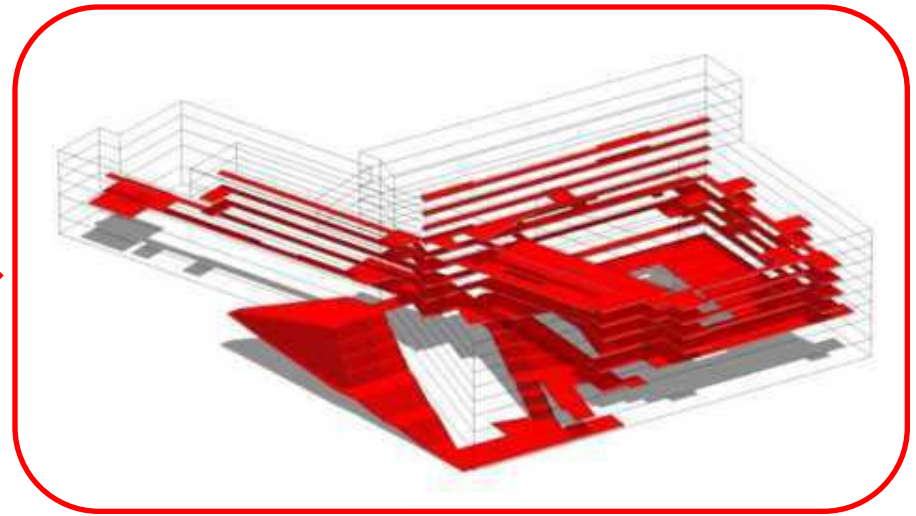
Principles of sustainable design for City Campus



**Concept Model:** An activated Learning Landscape

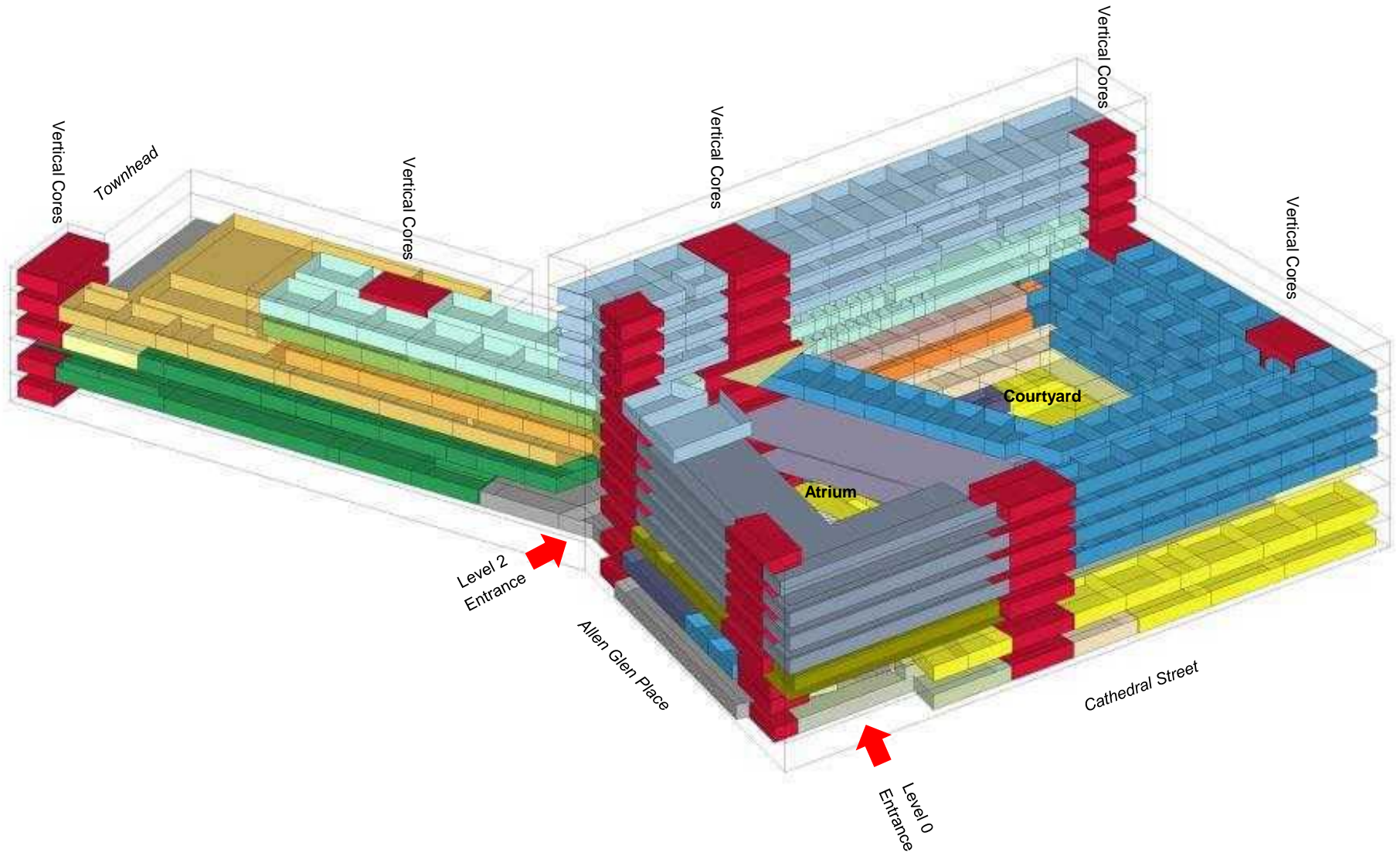
## Organising Principles

- The Learning Landscape: providing the College with opportunities for new ways of Learning
- 'Learning Ribbon' leads staff and students past specialist areas on their journey to general teaching areas
- Maximum flexibility for college adjacencies, horizontal and vertical circulation
- Awareness and interconnectivity of departments, teaching, learning and social facilities
- Every space is a place for learning
- Every corner including social and outdoor space, is a potential learning environment.
- Diversity of place types – some quiet and intimate, some suitable for group work and discussion – to suit varied learning preferences

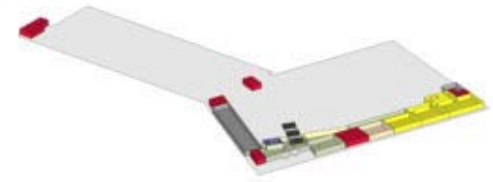


**'Learning Ribbon':** An enhanced circulation system

# Department Stacking

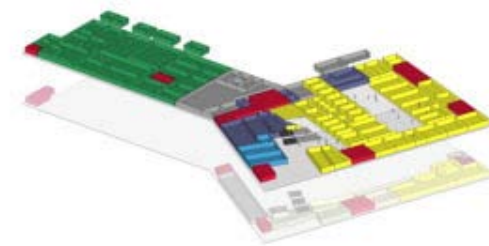


Department relationships



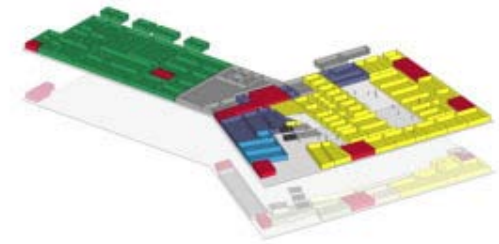
Food, Hospitality & Tourism – Training Restaurant with public access from Cathedral Street

- |                     |  |                          |                         |
|---------------------|--|--------------------------|-------------------------|
| Pooled Teaching     | Community Care & Social Sciences       | Languages & ESOL         | Library                 |
| Specialist Teaching | Business & Enterprise                  | <b>Hair &amp; Beauty</b> | Catering                |
| Construction        | Computing                              | Teaching Staff           | Corporate               |
| Art & Design        | <b>Food, hospitality &amp; tourism</b> | <b>Shared Learner</b>    | Support Staff           |
| Creative Industries | Sport                                  | Student development      | <b>Building Support</b> |













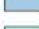
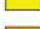
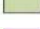
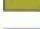






Food, Hospitality & Tourism – Training Kitchen with view of enclosed garden

- |                            |  |                       |                         |
|----------------------------|--|-----------------------|-------------------------|
| Pooled Teaching            | Community Care & Social Sciences       | Languages & ESOL      | <b>Library</b>          |
| <b>Specialist Teaching</b> | Business & Enterprise                  | Hair & Beauty         | Catering                |
| <b>Construction</b>        | Computing                              | Teaching Staff        | Corporate               |
| Art & Design               | <b>Food, hospitality &amp; tourism</b> | <b>Shared Learner</b> | Support Staff           |
| Creative Industries        | Sport                                  | Student development   | <b>Building Support</b> |



Construction – Brick laying

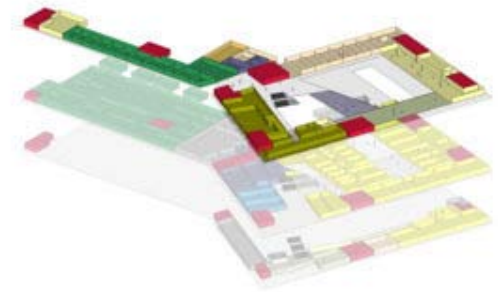
- |  |  |   |   |
|--|--|---|---|
|  Pooled Teaching            |  Community Care & Social Sciences       |  Languages & ESOL      |  <b>Library</b>          |
|  <b>Specialist Teaching</b> |  Business & Enterprise                  |  Hair & Beauty         |  Catering                |
|  <b>Construction</b>        |  Computing                              |  Teaching Staff        |  Corporate               |
|  Art & Design               |  <b>Food, hospitality &amp; tourism</b> |  <b>Shared Learner</b> |  Support Staff           |
|  Creative Industries        |  Sport                                  |  Student development   |  <b>Building Support</b> |



# Department stacking



Level 02



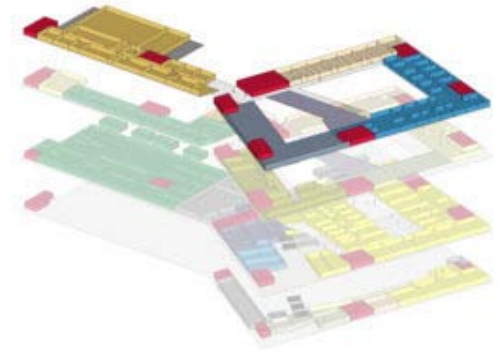
Level 02 entrance

- |                     |                                  |                     |                  |
|---------------------|----------------------------------|---------------------|------------------|
| Pooled Teaching     | Community Care & Social Sciences | Languages & ESOL    | Library          |
| Specialist Teaching | Business & Enterprise            | Hair & Beauty       | Catering         |
| <b>Construction</b> | Computing                        | Teaching Staff      | Corporate        |
| Art & Design        | Food, hospitality & tourism      | Shared Learner      | Support Staff    |
| Creative Industries | Sport                            | Student development | Building Support |















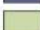







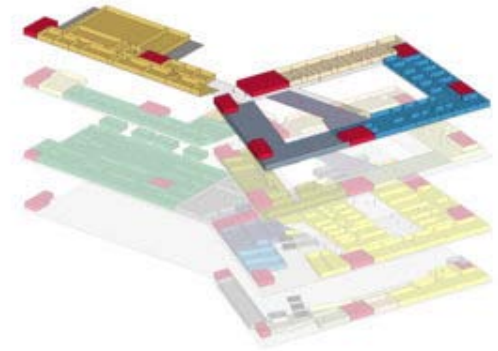
Hair & Beauty – Hair salon

- |                     |                                  |                            |                         |
|---------------------|----------------------------------|----------------------------|-------------------------|
| Pooled Teaching     | Community Care & Social Sciences | Languages & ESOL           | Library                 |
| Specialist Teaching | Business & Enterprise            | <b>Hair &amp; Beauty</b>   | <b>Catering</b>         |
| <b>Construction</b> | Computing                        | Teaching Staff             | Corporate               |
| Art & Design        | Food, hospitality & tourism      | <b>Shared Learner</b>      | <b>Support Staff</b>    |
| Creative Industries | <b>Sport</b>                     | <b>Student development</b> | <b>Building Support</b> |







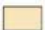
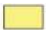














### Sport – Games Hall

|  |  |  |  |
|--|--|--|--|
|  <b>Pooled Teaching</b> |  Community Care & Social Sciences |  Languages & ESOL         |  <b>Library</b>   |
|  Specialist Teaching    |  Business & Enterprise            |  <b>Hair &amp; Beauty</b> |  Catering         |
|  Construction           |  Computing                        |  <b>Teaching Staff</b>    |  Corporate        |
|  Art & Design           |  Food, hospitality & tourism      |  Shared Learner           |  Support Staff    |
|  Creative Industries    |  <b>Sport</b>                     |  Student development      |  Building Support |



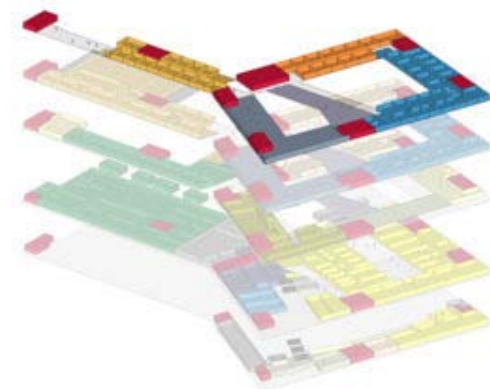
Pooled Teaching – General Classroom

- |  |  |  |  |
|--|--|--|--|
|  <b>Pooled Teaching</b> |  Community Care & Social Sciences |  Languages & ESOL         |  <b>Library</b>   |
|  Specialist Teaching    |  Business & Enterprise            |  <b>Hair &amp; Beauty</b> |  Catering         |
|  Construction           |  Computing                        |  <b>Teaching Staff</b>    |  Corporate        |
|  Art & Design           |  Food, hospitality & tourism      |  Shared Learner           |  Support Staff    |
|  Creative Industries    |  <b>Sport</b>                     |  Student development      |  Building Support |

# Department stacking



Level 04



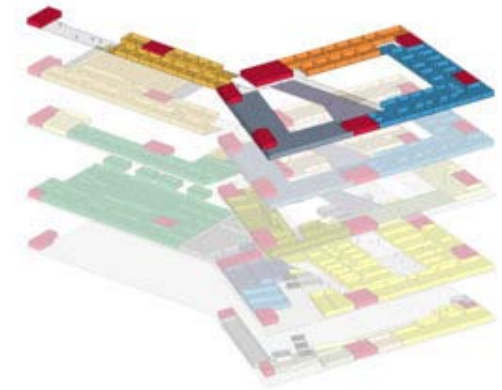
Business – Breakout space

- |                        |   |                       |                  |
|------------------------|---|-----------------------|------------------|
| <b>Pooled Teaching</b> | <b>Community Care &amp; Social Sciences</b> | Languages & ESOL      | <b>Library</b>   |
| Specialist Teaching    | <b>Business &amp; Enterprise</b>            | Hair & Beauty         | Catering         |
| Construction           | Computing                                   | <b>Teaching Staff</b> | Corporate        |
| Art & Design           | Food, hospitality & tourism                 | Shared Learner        | Support Staff    |
| Creative Industries    | Sport                                       | Student development   | Building Support |

# Department stacking

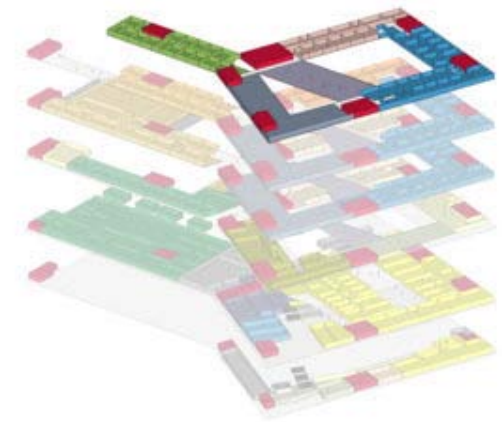


Level 04








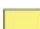






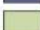







Community, Care & Social Sciences – Breakout space

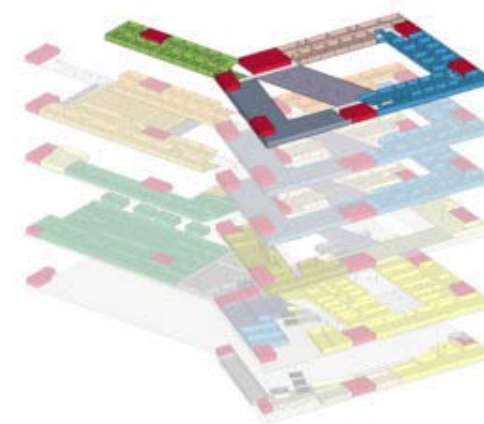
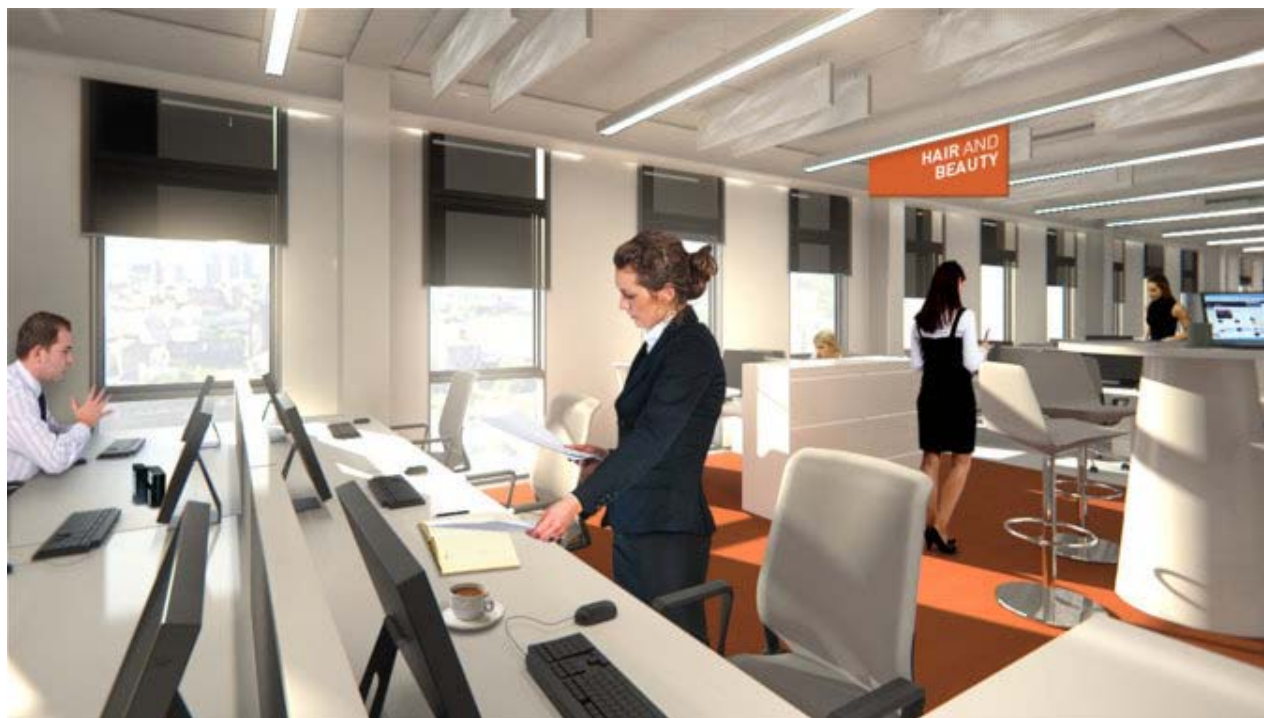
- |                        |   |                       |                  |
|------------------------|---|-----------------------|------------------|
| <b>Pooled Teaching</b> | <b>Community Care &amp; Social Sciences</b> | Languages & ESOL      | <b>Library</b>   |
| Specialist Teaching    | <b>Business &amp; Enterprise</b>            | Hair & Beauty         | Catering         |
| Construction           | Computing                                   | <b>Teaching Staff</b> | Corporate        |
| Art & Design           | Food, hospitality & tourism                 | Shared Learner        | Support Staff    |
| Creative Industries    | Sport                                       | Student development   | Building Support |



### Languages – Threshold space

- |  |  |   |  |
|--|--|---|--|
|  <b>Pooled Teaching</b> |  Community Care & Social Sciences |  <b>Languages &amp; ESOL</b> |  <b>Library</b>   |
|  Specialist Teaching    |  Business & Enterprise            |  Hair & Beauty               |  Catering         |
|  Construction           |  <b>Computing</b>                 |  <b>Teaching Staff</b>       |  Corporate        |
|  Art & Design           |  Food, hospitality & tourism      |  Shared Learner              |  Support Staff    |
|  Creative Industries    |  Sport                            |  Student development         |  Building Support |

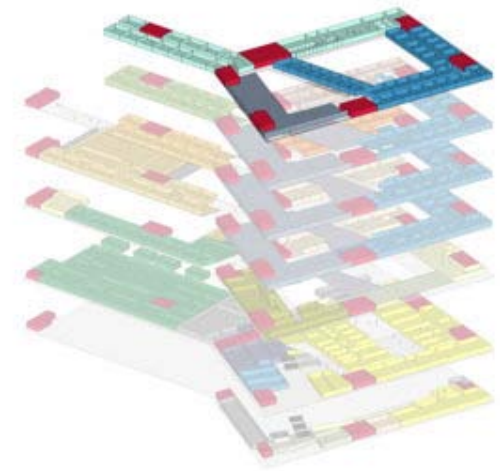
Level 05



Teaching Staff – Open plan office

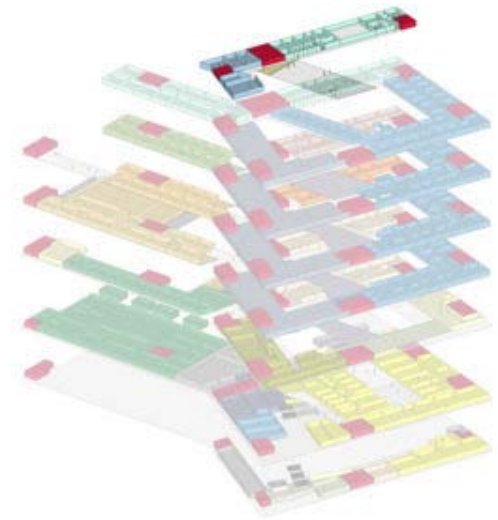
- |                        |                                  |                             |                  |
|------------------------|----------------------------------|-----------------------------|------------------|
| <b>Pooled Teaching</b> | Community Care & Social Sciences | <b>Languages &amp; ESOL</b> | <b>Library</b>   |
| Specialist Teaching    | Business & Enterprise            | Hair & Beauty               | Catering         |
| Construction           | <b>Computing</b>                 | <b>Teaching Staff</b>       | Corporate        |
| Art & Design           | Food, hospitality & tourism      | Shared Learner              | Support Staff    |
| Creative Industries    | Sport                            | Student development         | Building Support |





Creative Industries Recording Studio

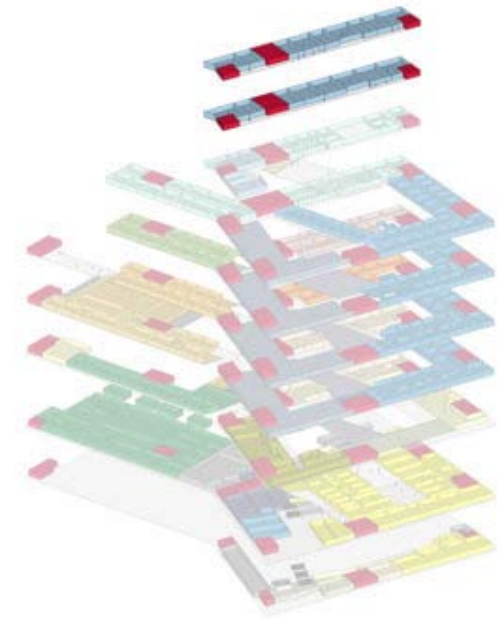
- |                            |                                  |                       |                  |
|----------------------------|----------------------------------|-----------------------|------------------|
| <b>Pooled Teaching</b>     | Community Care & Social Sciences | Languages & ESOL      | Library          |
| Specialist Teaching        | Business & Enterprise            | Hair & Beauty         | Catering         |
| Construction               | Computing                        | <b>Teaching Staff</b> | <b>Corporate</b> |
| Art & Design               | Food, hospitality & tourism      | Shared Learner        | Support Staff    |
| <b>Creative Industries</b> | Sport                            | Student development   | Building Support |























Catering – Level 07 Café with accessible Roof Garden

|                            |                                  |                     |                  |
|----------------------------|----------------------------------|---------------------|------------------|
| Pooled Teaching            | Community Care & Social Sciences | Languages & ESOL    | Library          |
| Specialist Teaching        | Business & Enterprise            | Hair & Beauty       | <b>Catering</b>  |
| Construction               | Computing                        | Teaching Staff      | Corporate        |
| <b>Art &amp; Design</b>    | Food, hospitality & tourism      | Shared Learner      | Support Staff    |
| <b>Creative Industries</b> | Sport                            | Student development | Building Support |

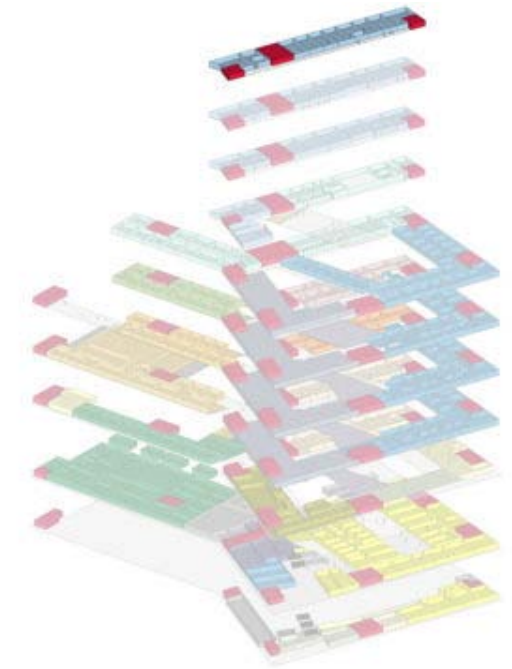
Level 08 & 09










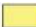







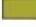
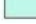



Art & Design – Doubled height, north lit Furniture Workshop

- |   |  |   |  |
|---|--|---|--|
|  Pooled Teaching         |  Community Care & Social Sciences |  Languages & ESOL    |  Library          |
|  Specialist Teaching     |  Business & Enterprise            |  Hair & Beauty       |  Catering         |
|  Construction            |  Computing                        |  Teaching Staff      |  Corporate        |
|  <b>Art &amp; Design</b> |  Food, hospitality & tourism      |  Shared Learner      |  Support Staff    |
|  Creative Industries     |  Sport                            |  Student development |  Building Support |

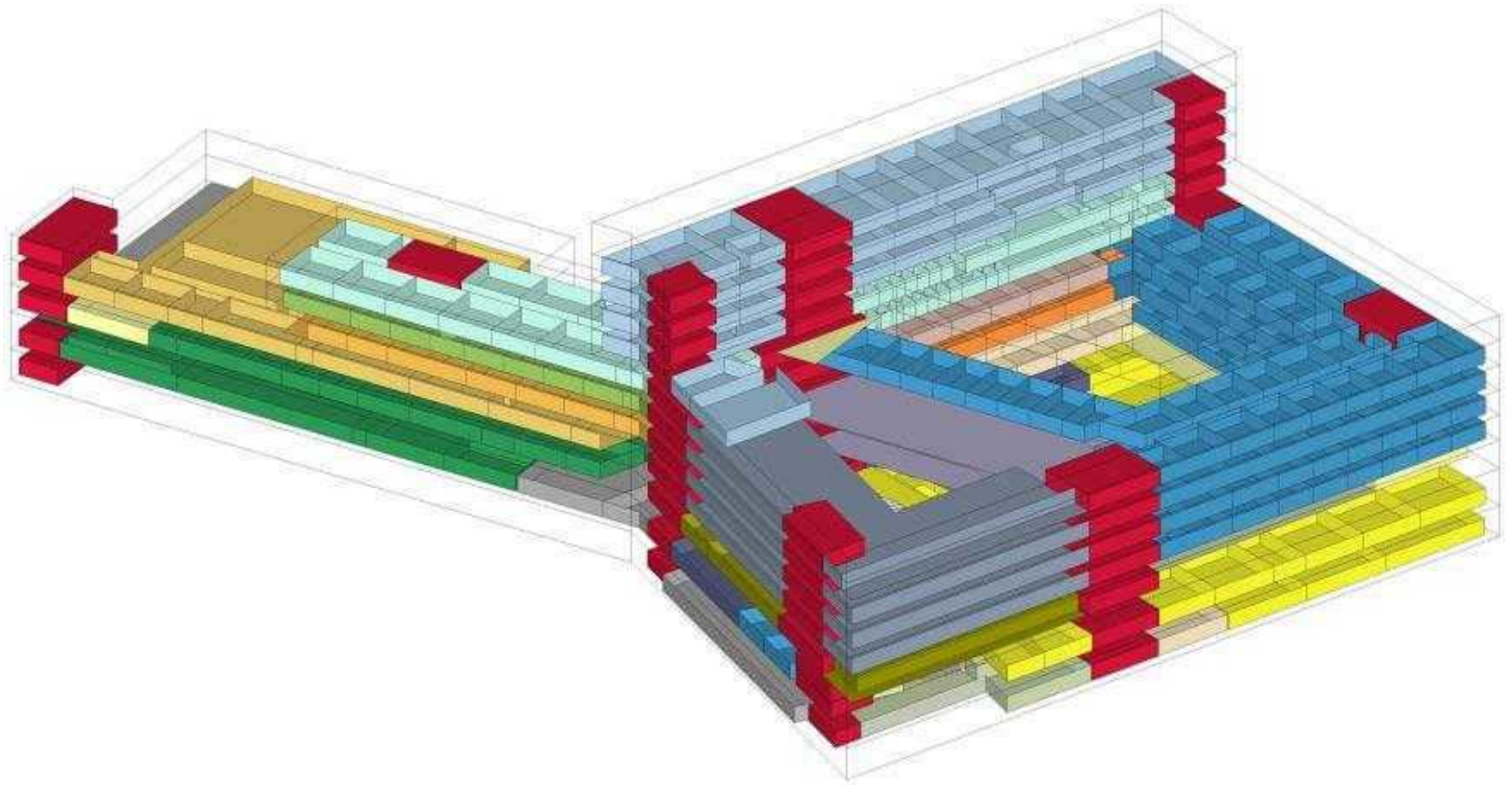
Level 10



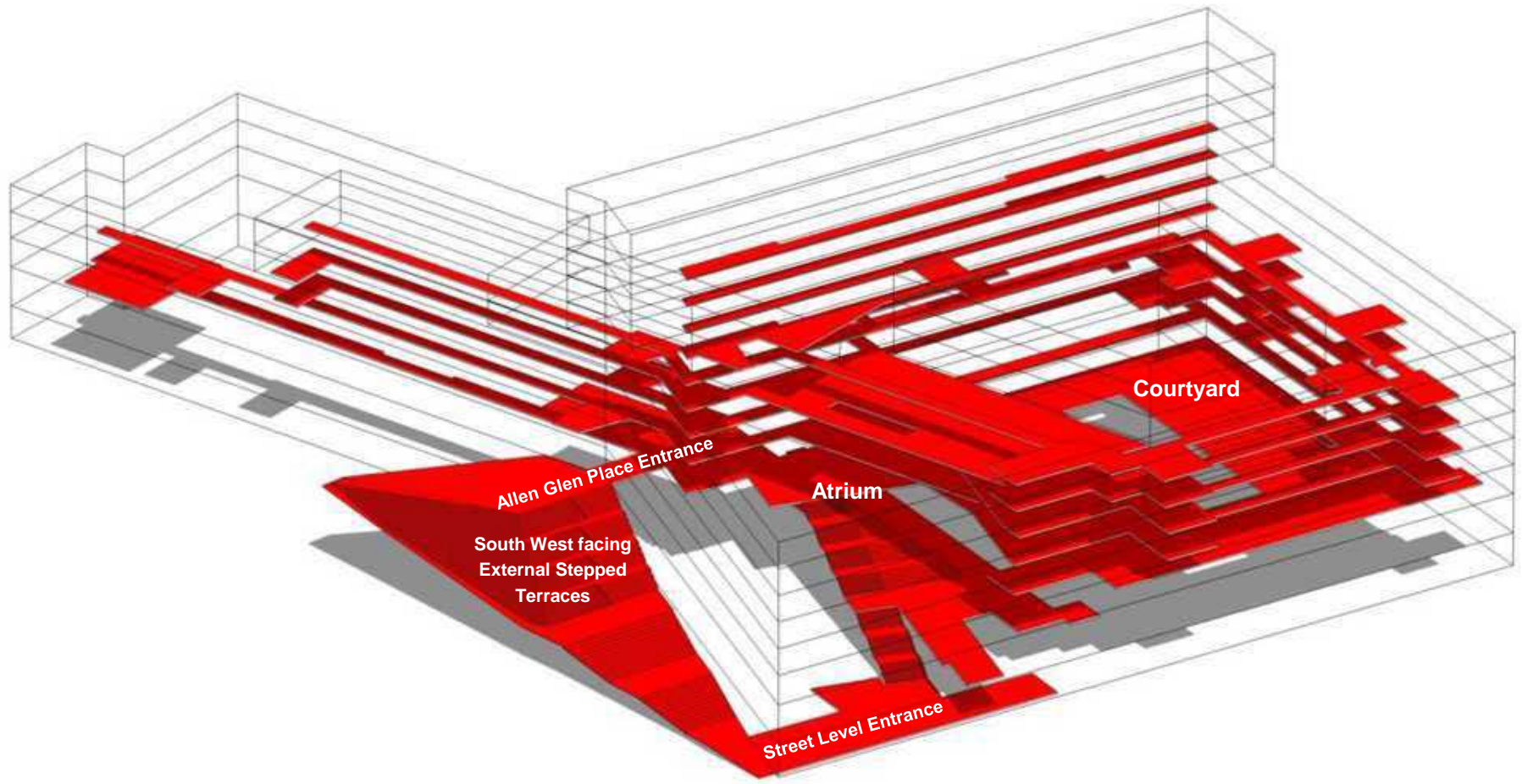
Sky Bar with panoramic City views

- |   |  |   |  |
|---|--|---|--|
|  Pooled Teaching         |  Community Care & Social Sciences |  Languages & ESOL    |  Library          |
|  Specialist Teaching     |  Business & Enterprise            |  Hair & Beauty       |  Catering         |
|  Construction            |  Computing                        |  Teaching Staff      |  Corporate        |
|  <b>Art &amp; Design</b> |  Food, hospitality & tourism      |  Shared Learner      |  Support Staff    |
|  Creative Industries     |  Sport                            |  Student development |  Building Support |

# Department stacking



## Department Circulation: An activated learning landscape

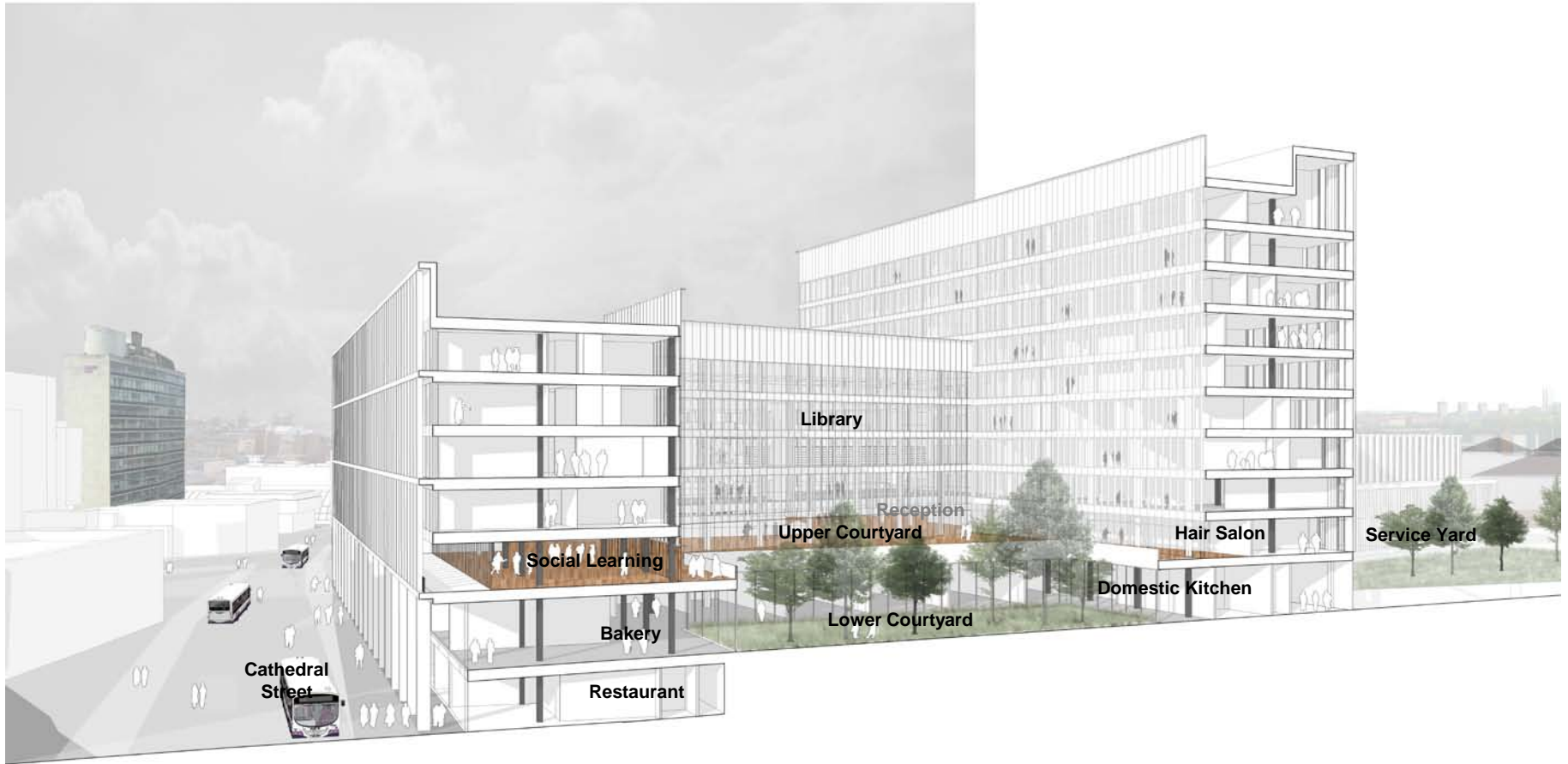


A ribbon of circulation that connects departments, delivers a diversity of learning opportunity through the Learning Landscape



**Key long section:** showing main Atrium and Library, teaching and office accommodation, break out spaces and sports and construction

## Design Proposals: the courtyard as a focus and destination



### A Sectional Idea

A section through the main Courtyard, surrounded by the Library, social spaces and teaching facilities



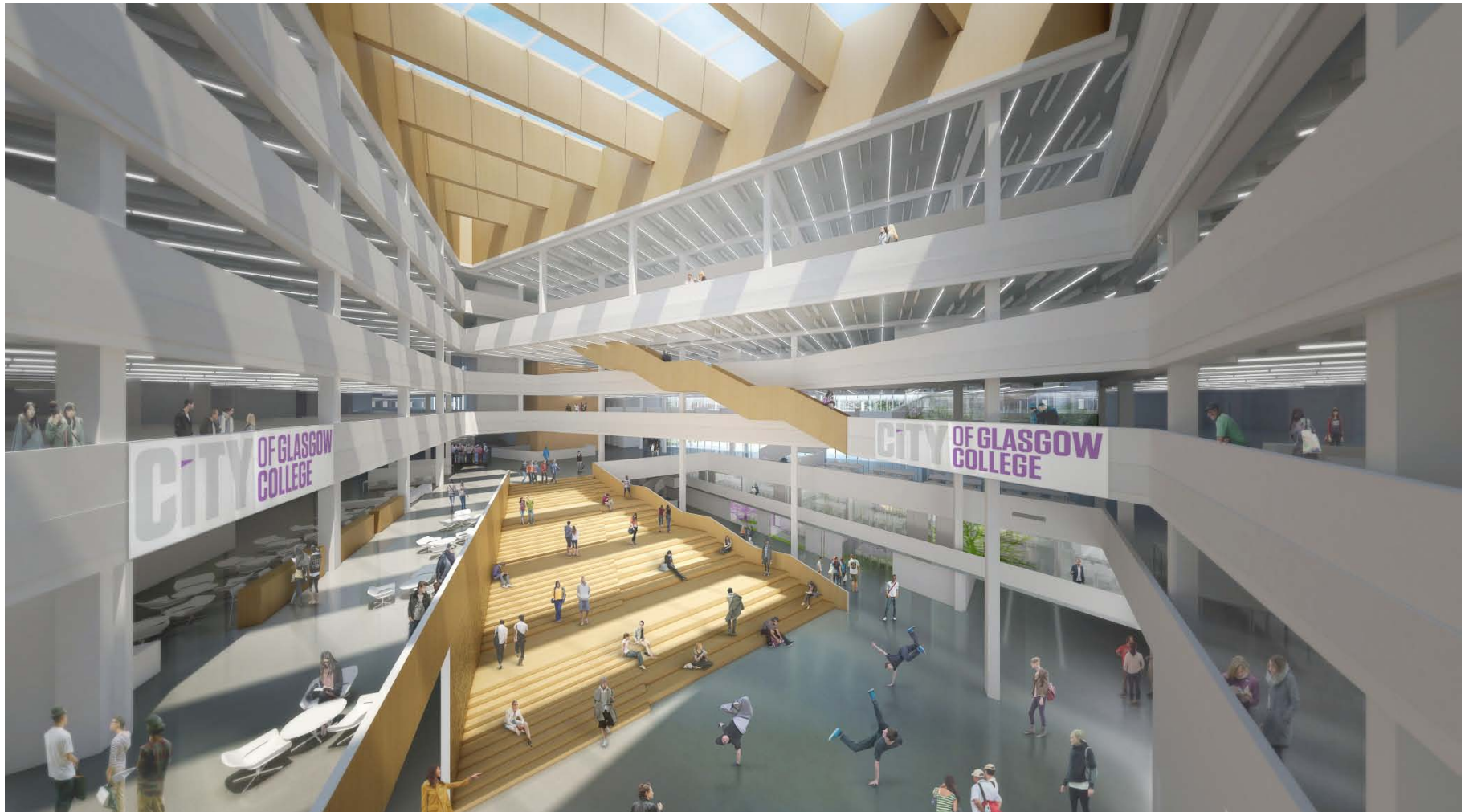


The Atrium

## Design Proposals: an activated, dynamic space



**The Atrium:** vibrant, dynamic gathering place, collecting key reception, breakout, learning & flexible, social spaces. A place for sharing ideas



**The Atrium:** a grand room, at the heart of the campus for exhibition, performances, college gatherings and sharing ideas

## Design Proposals: meeting, greeting & orientation

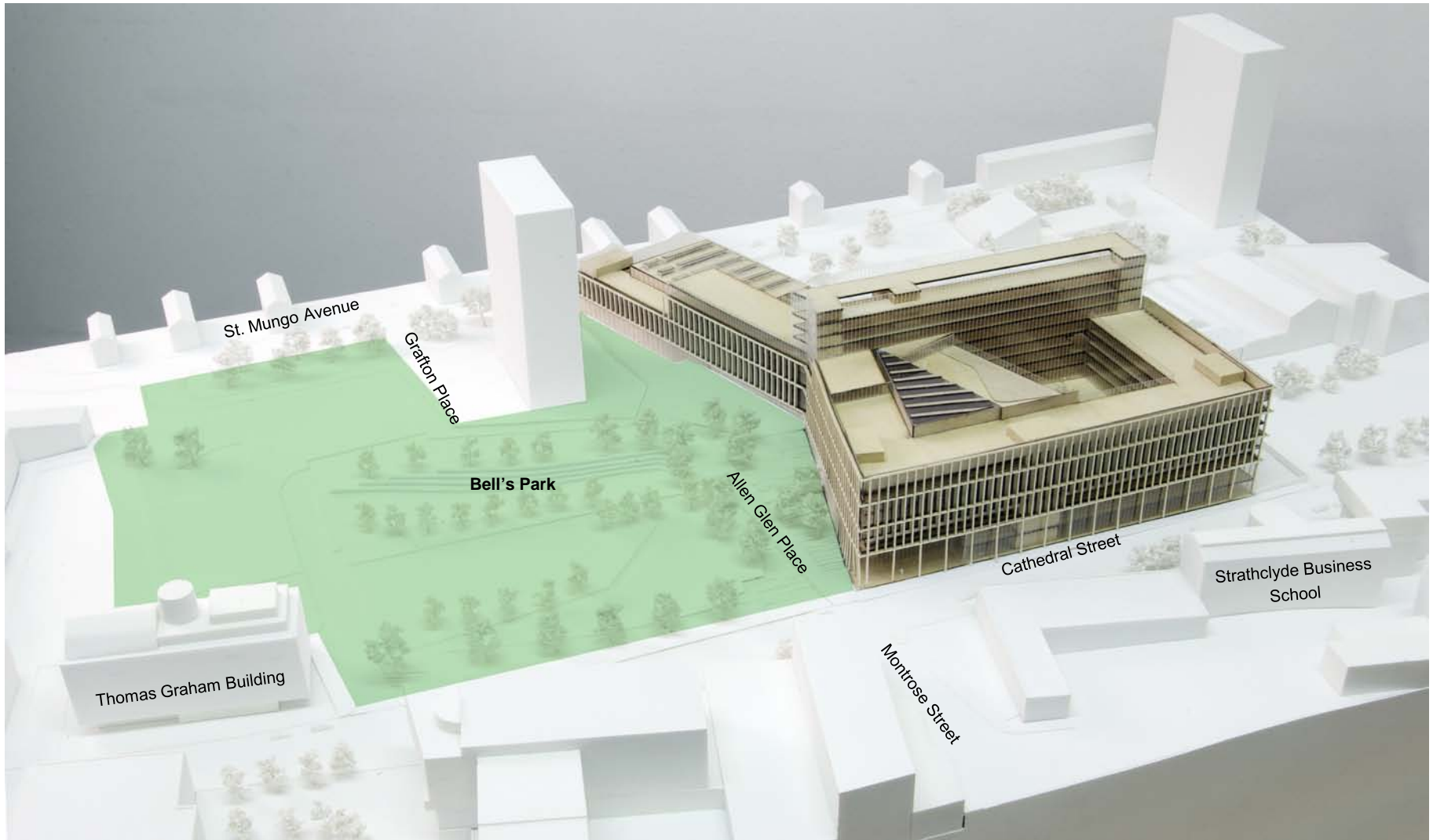


**Internal** Level 02 Entrance

A place to meet and socialise, opportunities for exhibition



**Interiors** Level 3 looking down to level 2 entrance and Construction breakout space  
Departments can interact and student learning inhabits different environments throughout the college



**City Campus:** a hill side location (formally College Hill) forming the new open civic space (Bell's Park ) located on the edge of the City's merchant grid

# Landscape and Public Realm



**City Campus** celebrates its hill top location through a hard and soft terraced landscape which create a series of usable south and west facing steps, seats and open spaces. The new Bell's Park creates a valuable public amenity space for the students and public alike.



A parkland setting

City Campus

## Landscape and Student Realm



**Central student courtyard:** a place to meet, chat and recharge



**South facing social steps and landscaped terraces:** addressing the city through the new Bell's Park landscape

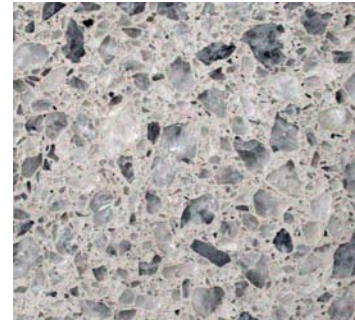


## Landscape and Student Realm



### **Roof top garden**

A garden on the roof accessed from the Cafe: sip a coffee from the break out space before you take some fresh air and relax with friends



White Granite



Dutch Clay Bricks



White precast concrete steps,  
granite pavers, setts & stainless  
steel handrails



Granite pavers and setts



Modular concrete pavers

**South west facing terraced steps:** meet , greet, relax and socialise

## External Building Materials: Precast Concrete cladding



### Precast concrete

Crisp concrete detailing in large panels



Cast-in pattern



Precast cills and brise soleil



Precast square-section columns as screen to facade

We have chosen a palette of refined materials, simple and elegant and appropriate to the buildings' civic language and particular site conditions.

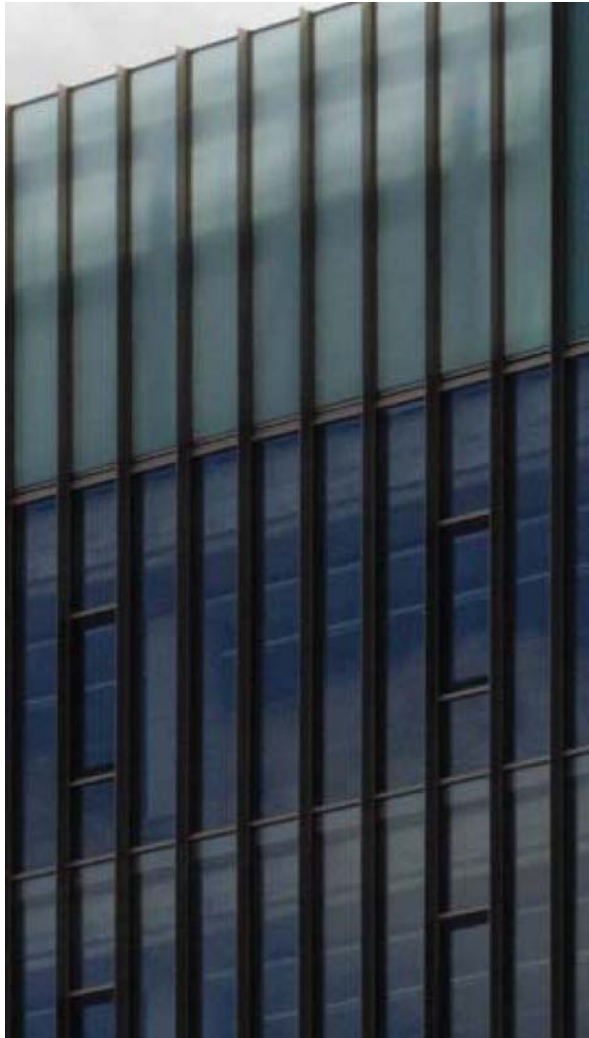
The palette centres around glass, white precast concrete and anodised metal. These materials and their soft finish are particularly sensitive to our Northern Light.

It is paramount that the building ages and weathers well and is easily maintainable. Our material selection and quality of detailing and construction will ensure that this is achieved.



White acid washed precast concrete

# External Building Materials: Curtain Walling and Glazing



Expressed vertical grain and projecting fin  
**Curtain Walling**



Insulated metal cladding  
and expressed fins



Horizontal and vertical grain



Projecting curtain wall fins



Internal views of curtain walling



Opening light glazed into  
curtain walling

# Public Art: feel the potential - emulate, enrich, stimulate, inspire



Kenny Hunter: *Tron*



Simon Corder: *New Wynd*



John Mossman: *Cherubs*



Toby Paterson: *Poised Array*

Glasgow has a very successful history of artist collaboration, from the architectural and civic adornment of the Merchant City to modern interventions scattered around the city that question, inspire and enliven the very fabric of the city, enhancing one's journey. With artist collaborations, we will take advantage of our artistic heritage and inspire students and public



Douglas Gordon: *Empire Sign* Tontine Lane



Hamilton Finlay: *Bridge Piers*



Louise Crawford: *Dugout Canoe*



Kenny Hunter: *Tron*



Edwin Morgan: *City Halls*



George Wyllie: *Running Man*



John Honeyman: *3 Union St*



Folk Lore: *Barrowlands Sign*



Carlo Marochette: *Duke of Wellington*



John Baird: *Sloans Arcade*

## Glasgow's artist collaborations within the city

# Architectural Lighting: Dramatic & Inspiring Illumination



Speirs + Major / Fosters: 3 More Riverside Office Atrium



Speirs + Major / Fosters: 3 More Riverside Balconies



Altes Museum Loggia Entrance, Berlin



Speirs + Major: New Street Square, London



Speirs + Major: Concept Sketch

Specialist Architectural Lighting will transform the building's interior and exterior beyond imagination, enhancing the 3-dimensional form of the building or capturing and defining rhythmic elements, or making a statement that compliments the Client's vision.

Specialist lighting also helps locate the building in the City's night time economy, bringing cross over public/student facilities to life, impart welcoming feelings, whilst improving public notions of safety and building security.

**Illuminate your imagination**

# Design Proposals: City vistas

City Campus



A new city landmark



Stepping down to domestic scale of St. Mungo Avenue

City Campus



College in the City

City Campus



## See and be Seen

An inspiring city centre setting, beside Glasgow's bustling heart, but elevated to take full advantage of rooftop views and distant vistas





## **External** Main Entrance from Cathedral Street

A new urban landscaped park provides a fantastic college setting. Grand building entrances addressing the park & street, welcome students inside



## External

View of level two entrance looking South to Allen Glen Place



**External** City view looking West along Cathedral Street

A New Civic Building, reinforcing and activating the street edge, proudly takes a prominent place on the city skyline



**External Cathedral Street**

The College's Training Shops (Baker, Butcher, Fishmonger, Nail Bar, Hairdresser, Restaurant) enliven the street and are accessible to the public